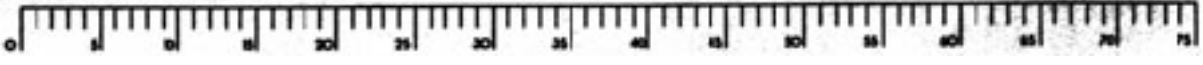
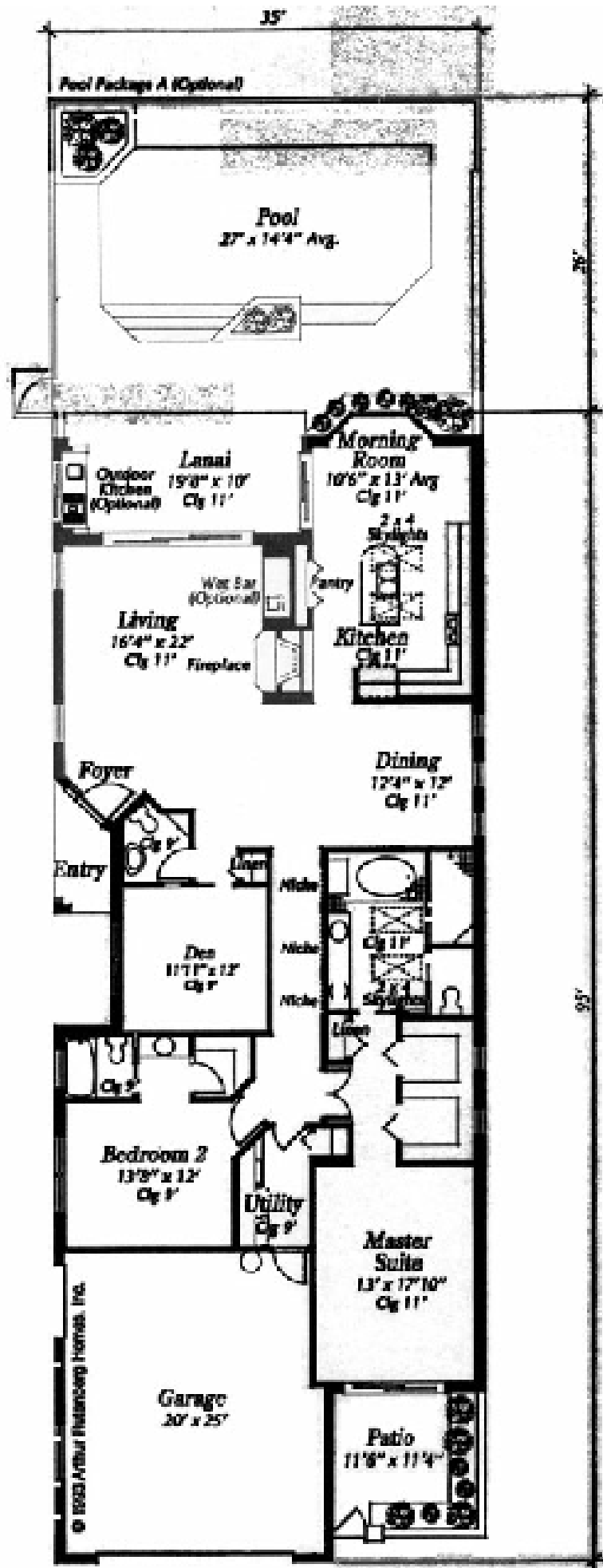


Plans and specifications subject to change without notice. Certain items such as the pool, fireplace or roof tile shown may be optional. Reference should be made to the applicable specifications.

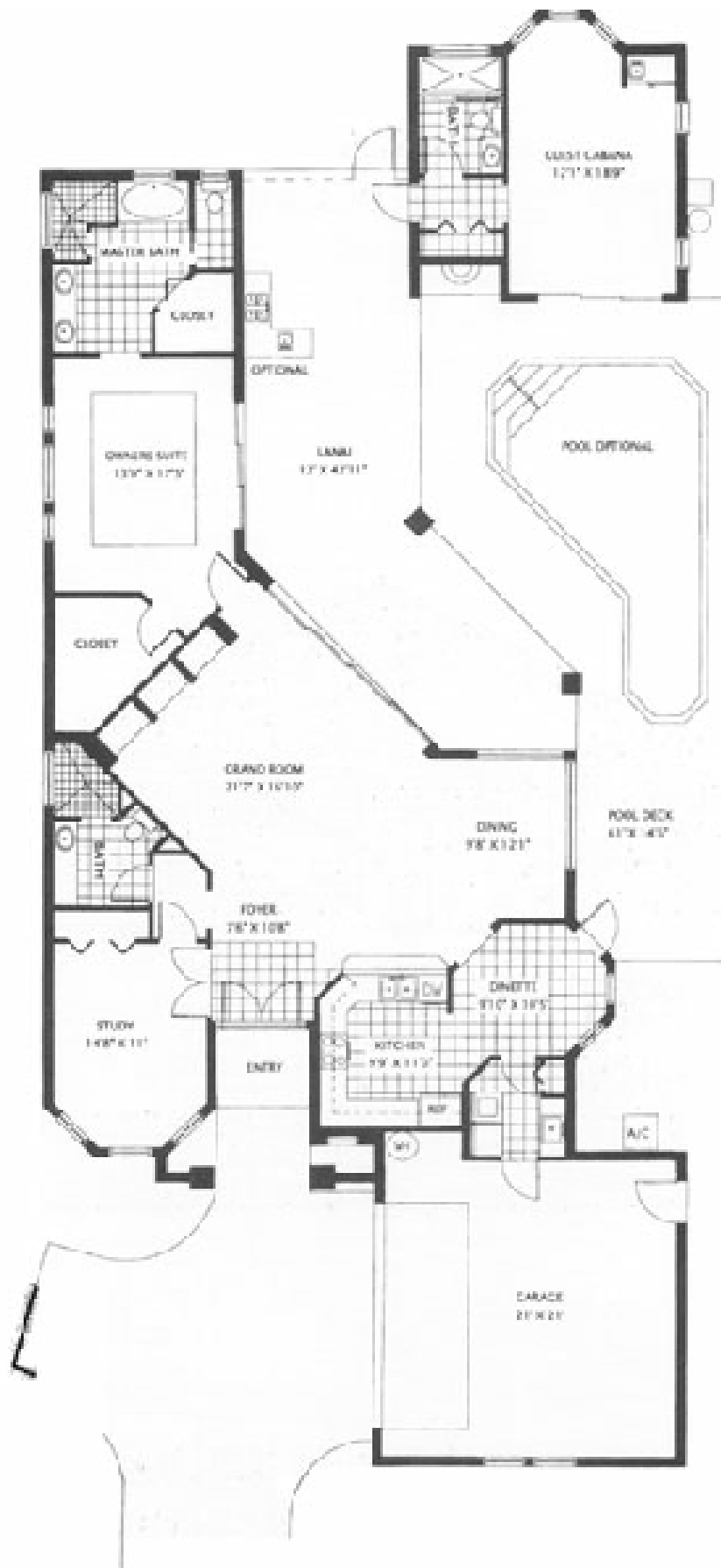


AUGUSTA II

Living	2,286 S.F.
Lanai	196 S.F.
Garage	563 S.F.
Entry	33 S.F.
Total	3,078 S.F.



Augusta II
2,286 square feet

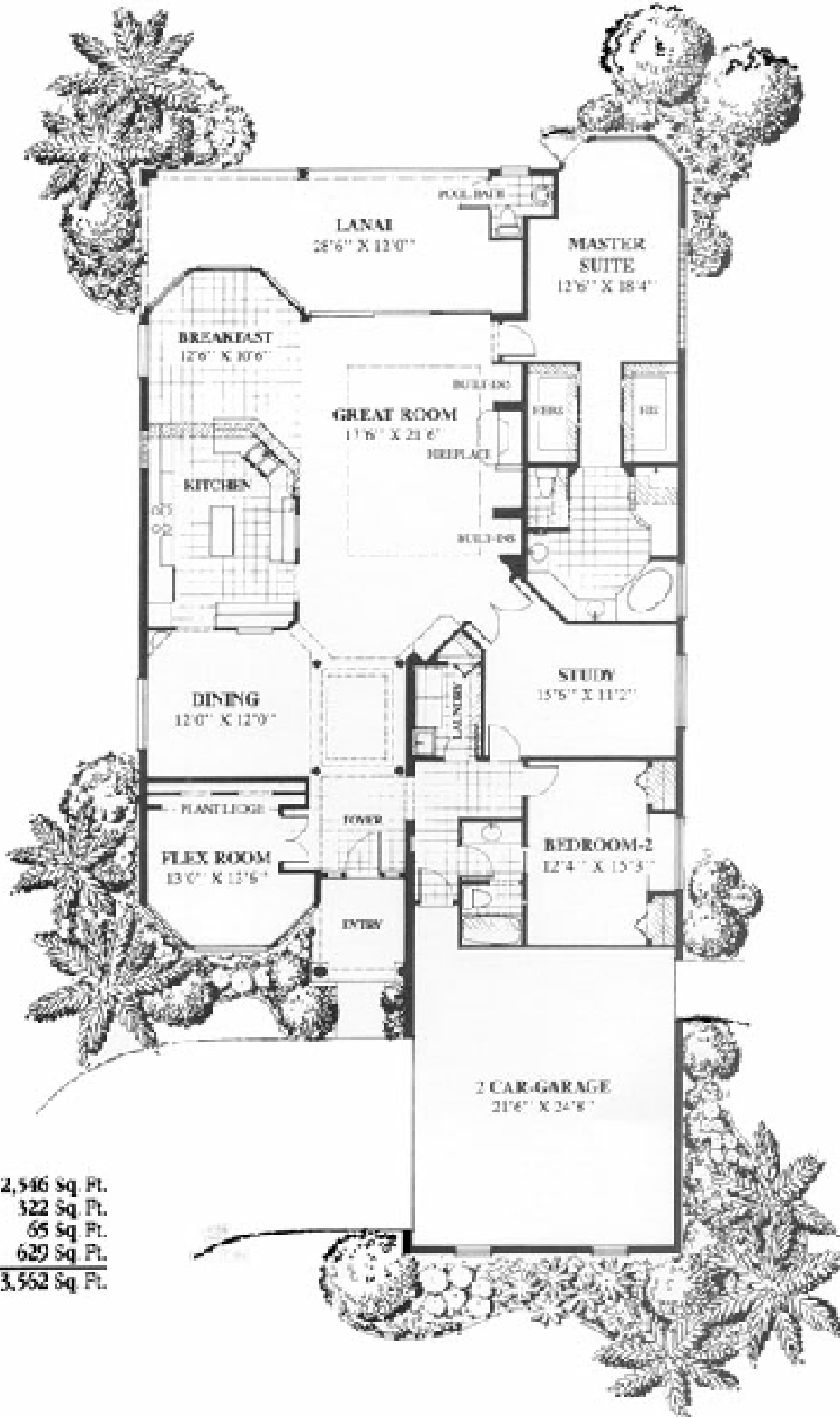


Square Footage	
Living Area	2,113 Sq. Ft.
Under A/C	545 Sq. Ft.
Lanai	38 Sq. Ft.
Entry	500 Sq. Ft.
TOTAL	3,196 Sq. Ft.

Kensington Golf & Country Club
 2700 Pine Ridge Road (one mile east of Airport Road), Naples, Florida 34109
 Phone (941) 645-5699 or 1-800-216-1845

All dimensions and specifications are approximate and subject to change without notice. Square footage is based on exterior wall dimensions. Seller reserves the right to make changes in the materials, appliances, or equipment. Any substituted materials, appliances, or equipment shall be of equivalent or better quality. Some restrictions on exterior color selections may apply. Illustrations are an artist's rendering.





Square Footage

Living Area	
Under A/C	2,546 Sq. Ft.
Lanai	322 Sq. Ft.
Entry	65 Sq. Ft.
Garage	629 Sq. Ft.
TOTAL	3,562 Sq. Ft.

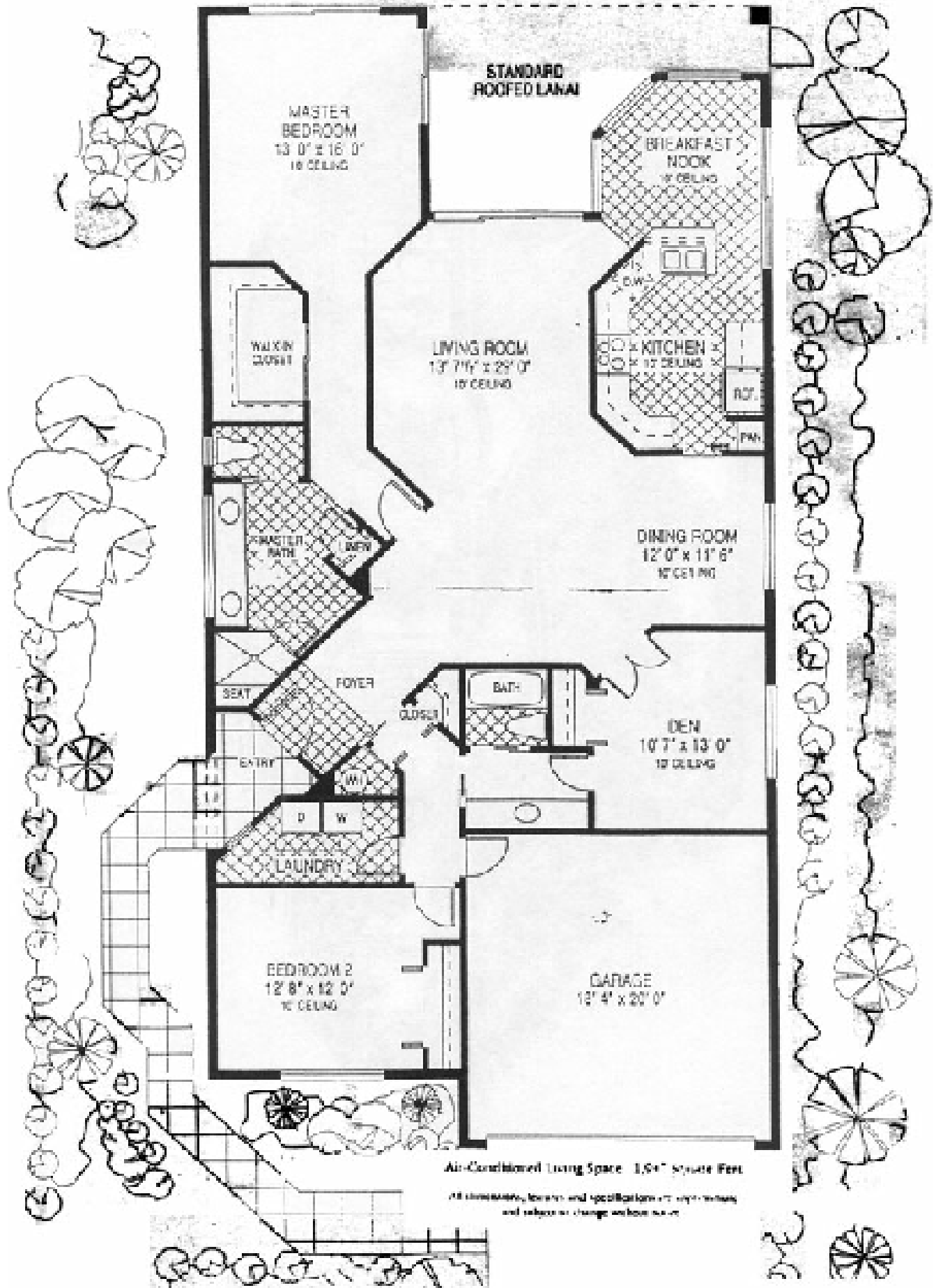
Kensington Golf & Country Club
 2700 Pine Ridge Road (one mile east of Airport Road), Naples, Florida 34109
 Phone (941) 649-5699 or 1-800-216-1845.

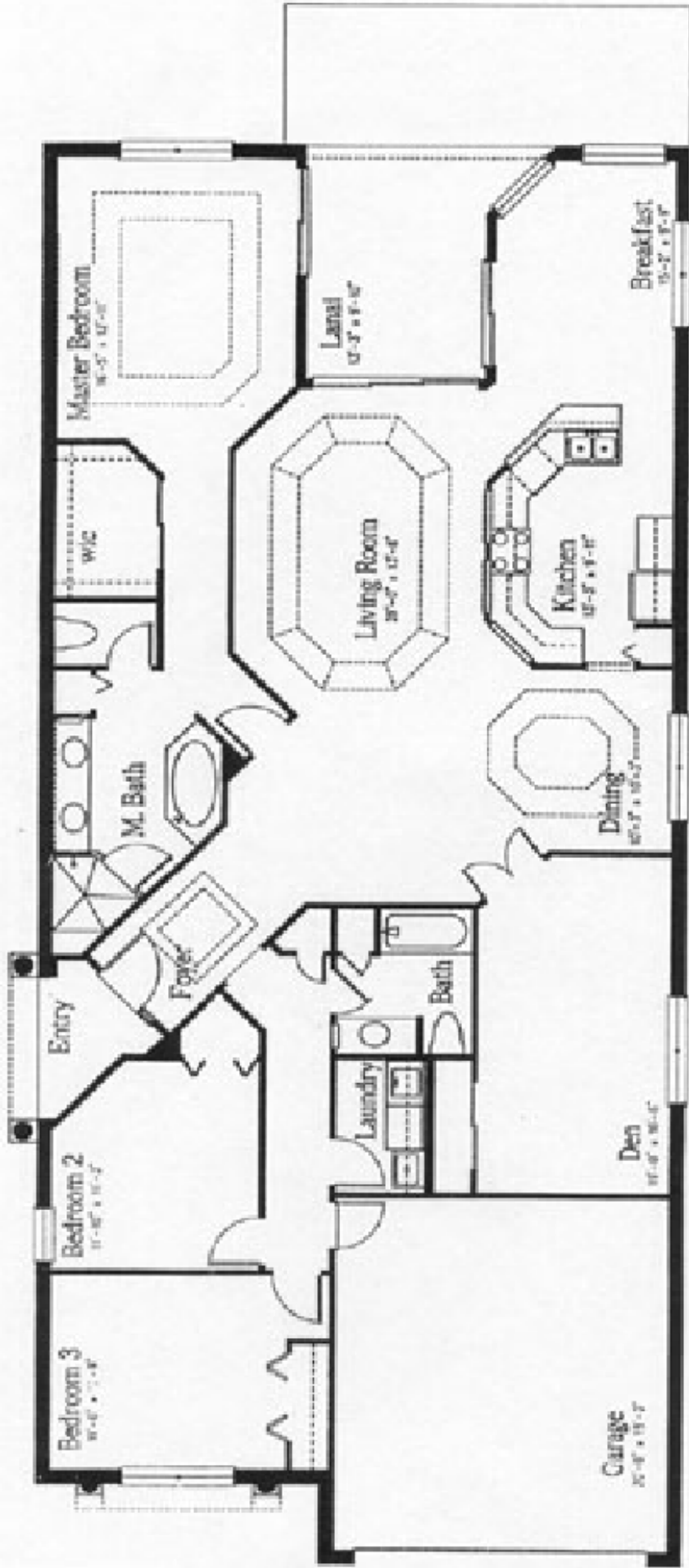
All dimensions and specifications are approximate and subject to change without notice. Square footage is based on exterior wall dimensions. Seller reserves the right to make changes in the materials, appliances, or equipment. Any substituted materials, appliances, or equipment shall be of equivalent or better quality. Some restrictions on exterior color selections may apply. Illustrations are an artist's rendering.



Canterbury I

2 Bedroom Plus Den, 2 bath

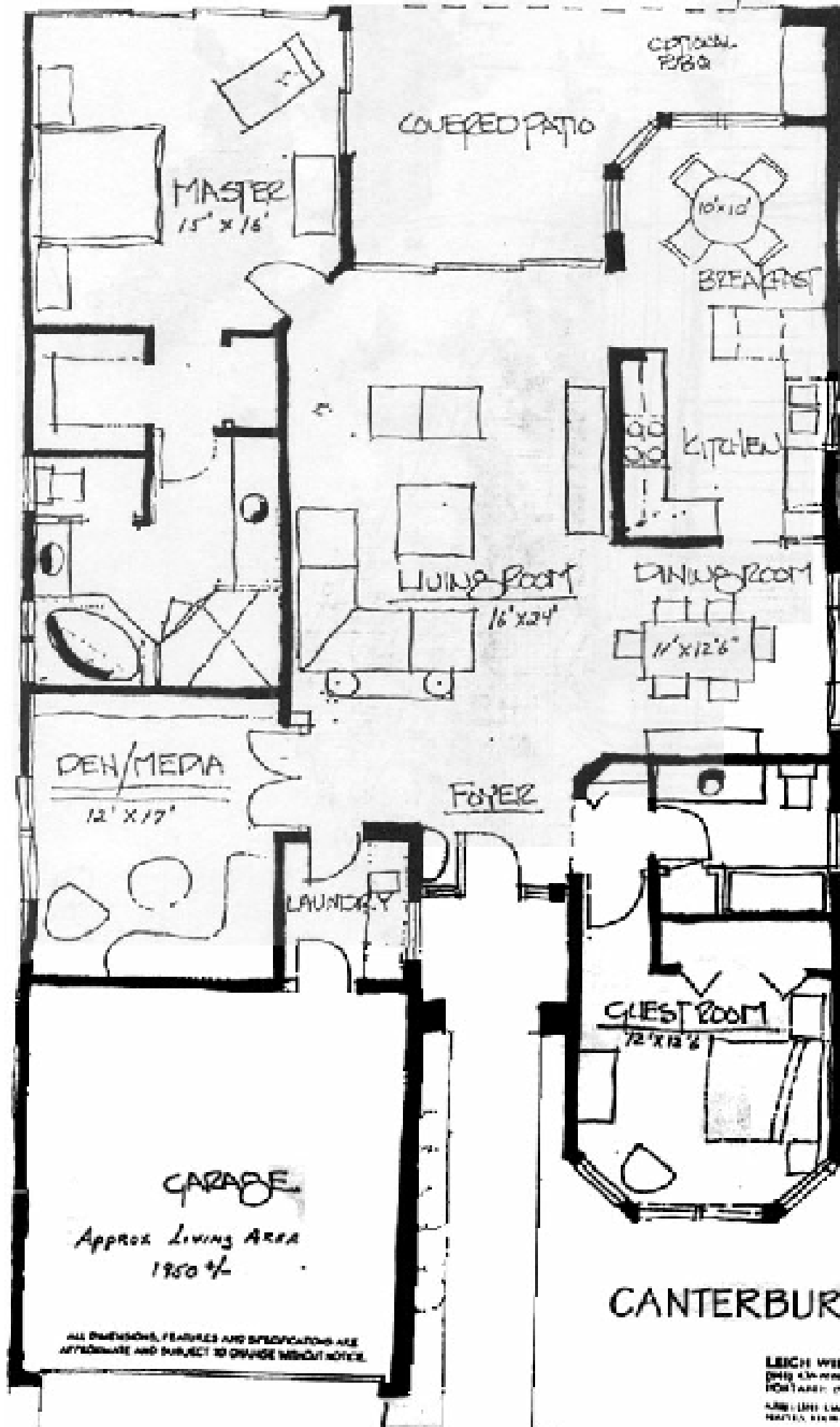




AREA	AREA
AC AREA	2165 SF
ENTRY	51 SF
LANAI	128 SF
GARAGE	395 SF

The Canterbury II

St. Andrews Development



ALL DIMENSIONS, FEATURES AND SPECIFICATIONS ARE APPROXIMATE AND SUBJECT TO CHANGE WITHOUT NOTICE.

CANTERBURY III

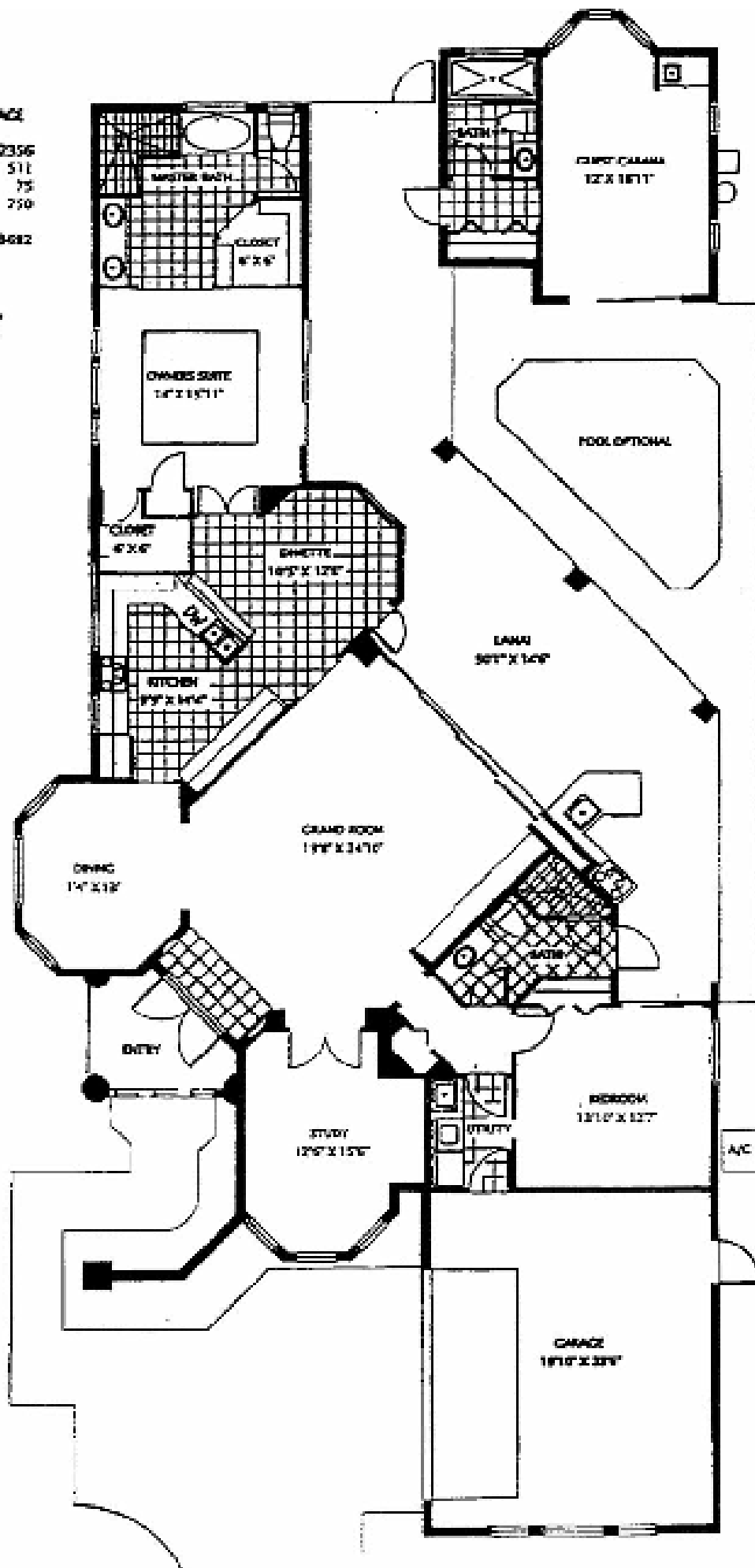
LEIGH WILSON
 603-436-0000
 100 TOWN CENTER DRIVE
 NORTON, MA 01946

ST. ANDREWS

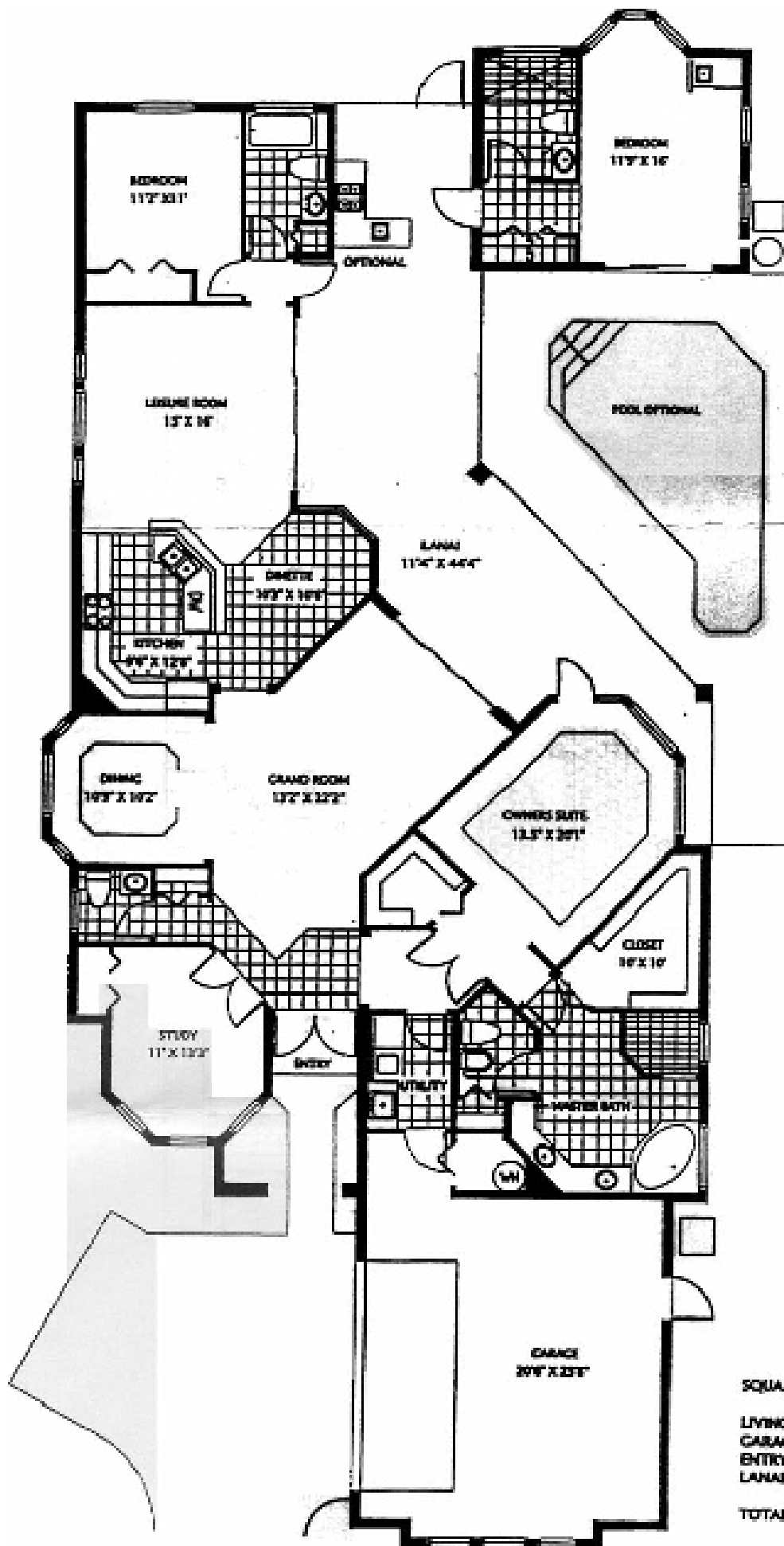
SQUARE FOOTAGE

LIVING AREA	2356
GARAGE	511
ENTRY	75
LANAI	250
TOTAL	3482

The Bedford



All plans, dimensions, and information are approximate and subject to change without notice.



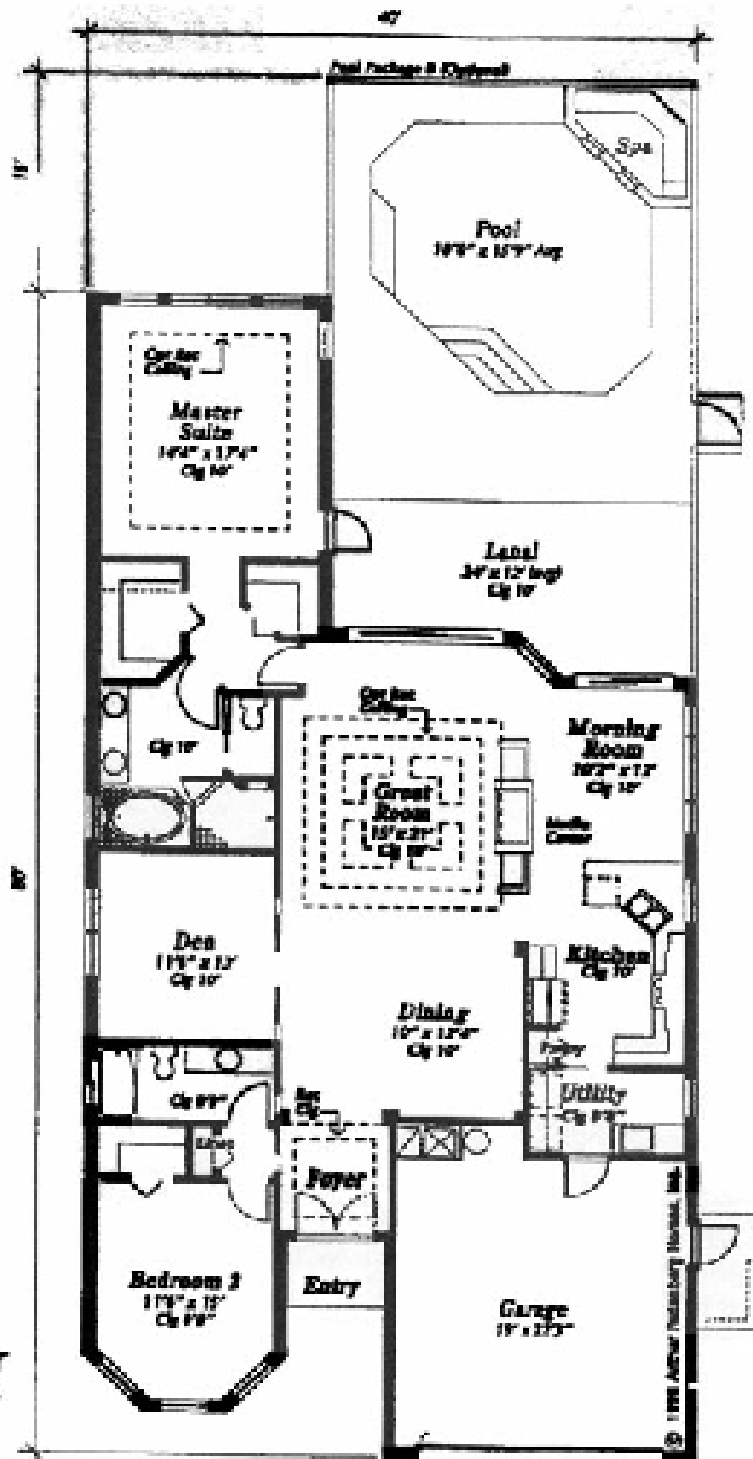
The Chantilly

SQUARE FOOTAGE

LIVING AREA	2458
GARAGE	573
ENTRY	29
LANAI	530
TOTAL	3590

Montreux III 388-02

Floor Plan



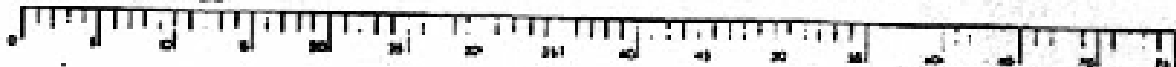
Montreux III

2,037 square feet
Plan # 388-02

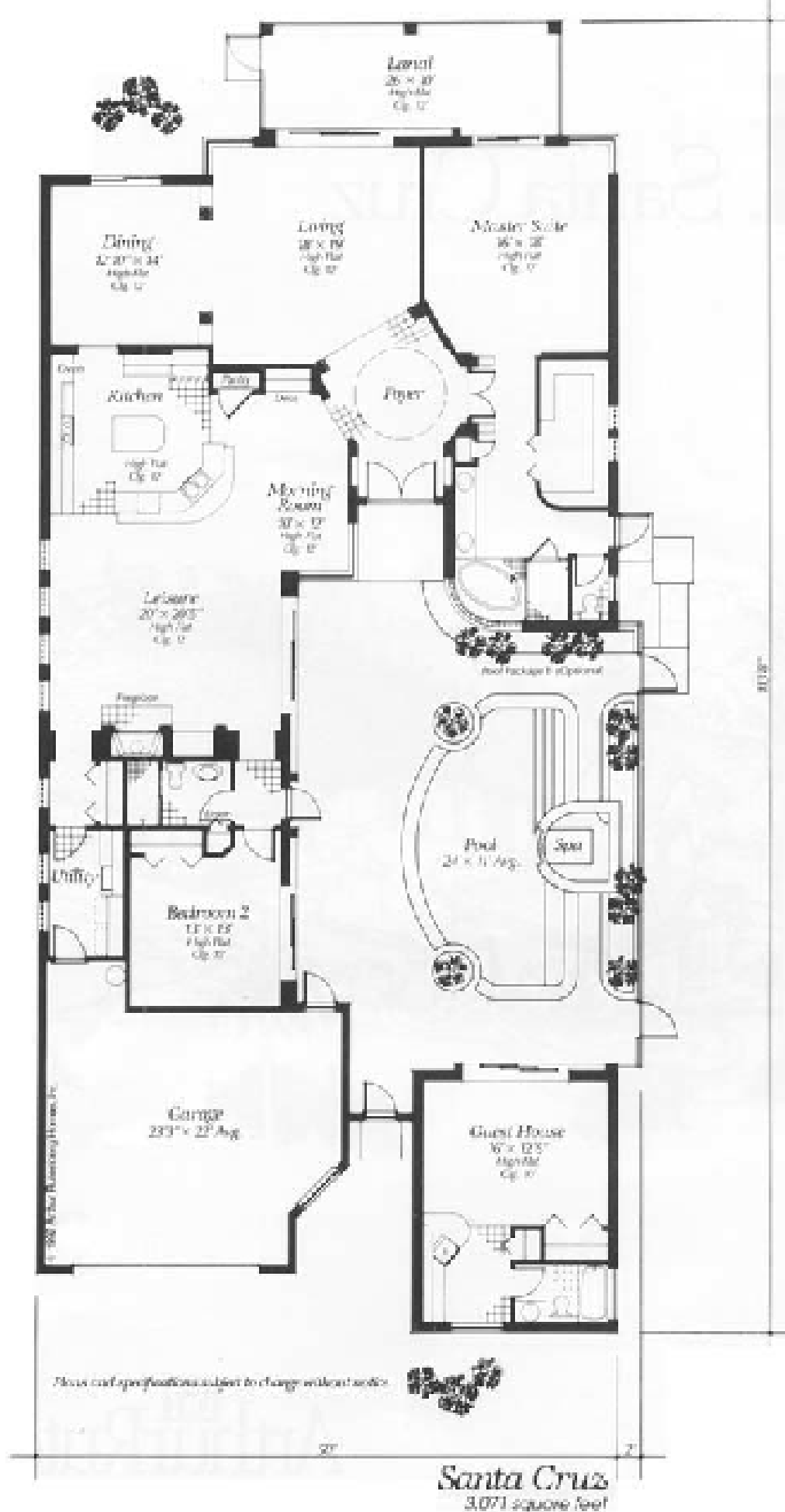
Living	2,037 S.F.
Lanai	247 S.F.
Garage	435 S.F.
Entry	30 S.F.
Total	2,749 S.F.

Plans and specifications subject to change without notice. Certain items such as the pool, tractor or roof lift shown may be optional. Reference should be made to the applicable specifications.

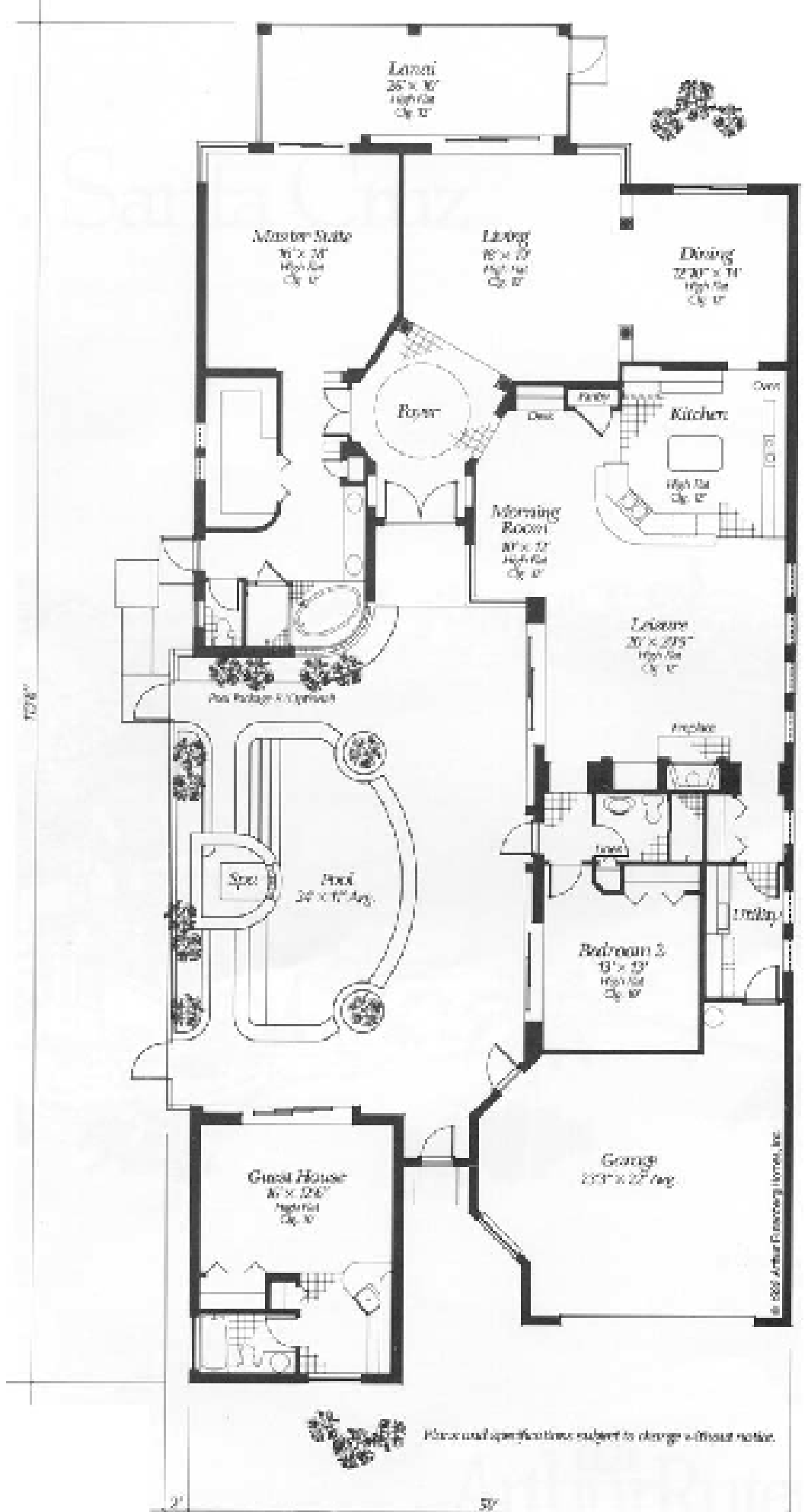
MEASUREMENT IN FEET



May 30, 1997



Arthur Rosenberg Homes reserves the right to make modifications to floor plans, materials and specifications without notice. The floorplans, illustrations and photography in this Design Collection are conceptual only. Dimensions are approximate. For a more accurate floor plan, reference should be made to the Product Manual.

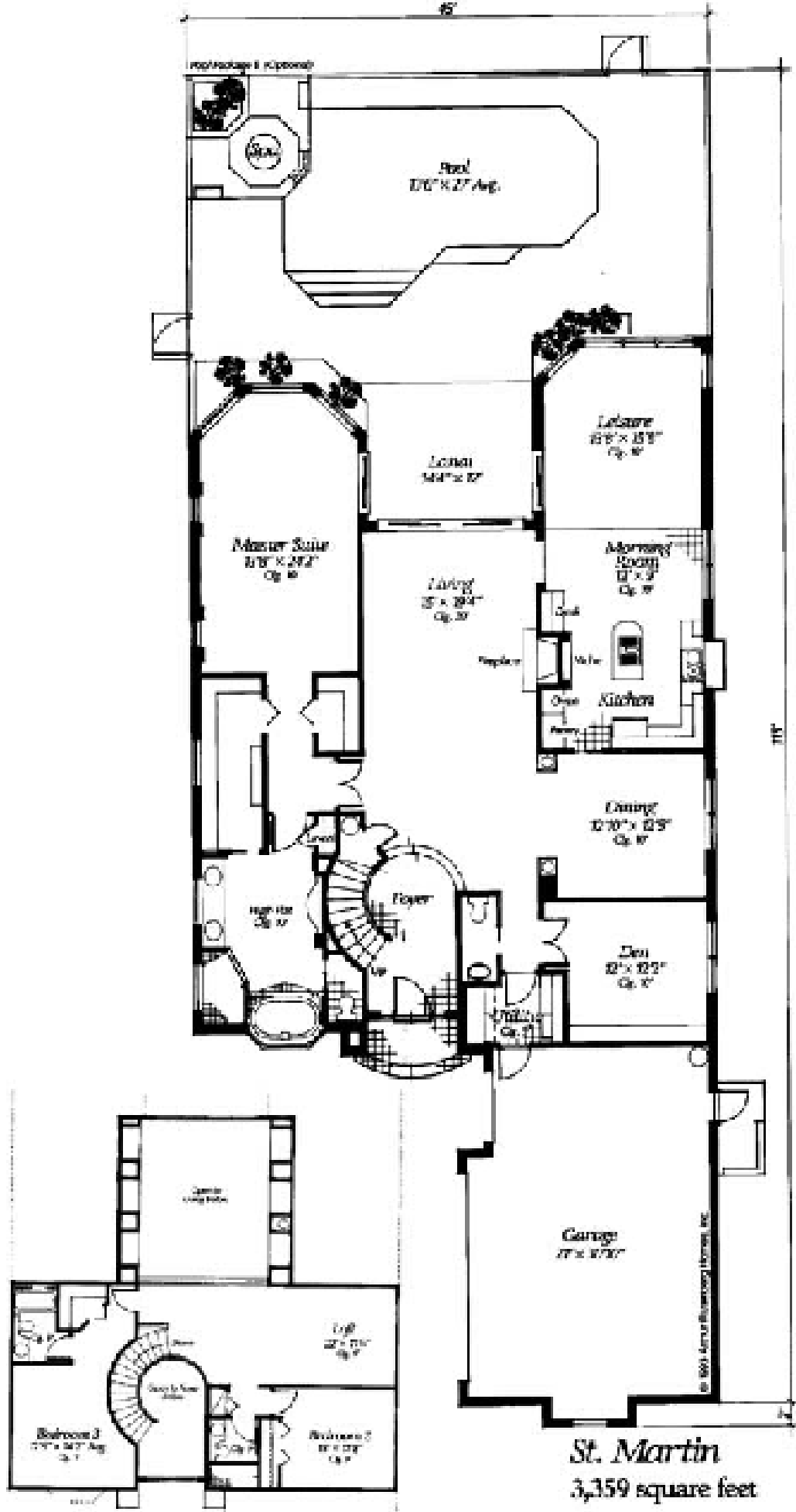


Santa Cruz

Dimensions and specifications subject to change without notice.

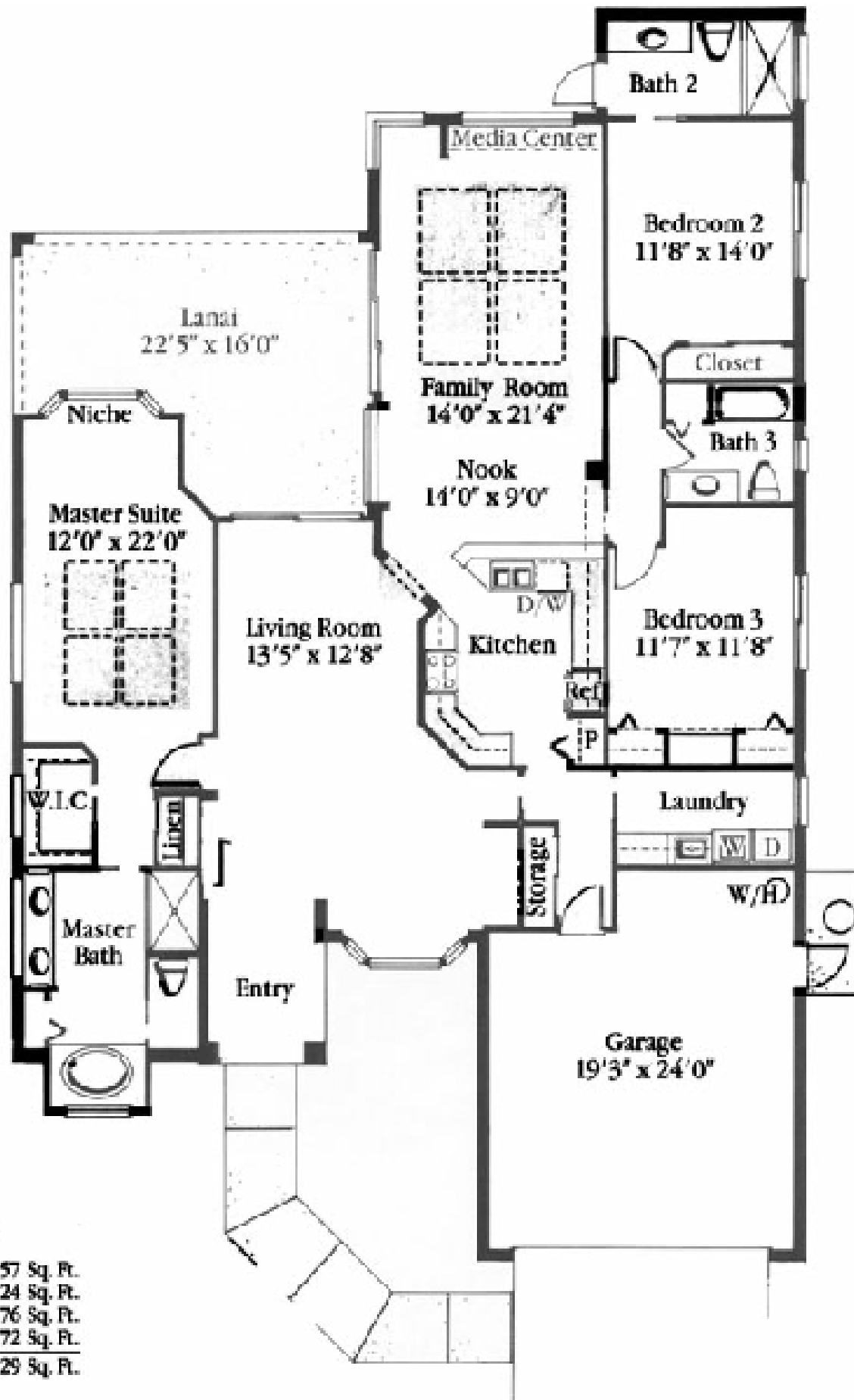
Santa Cruz
3,071 square feet

© 2000 Arthur Rutenberg Homes, Inc.



St. Martin
3,359 square feet

Arthur Rutenberg Homes reserves the right to make modifications to floor plans, materials and specifications without notice. Dimensions are approximate. Illustrations are artist renderings only. This is a concept drawing. For a more accurate floor plan, reference should be made to the Product Manual.



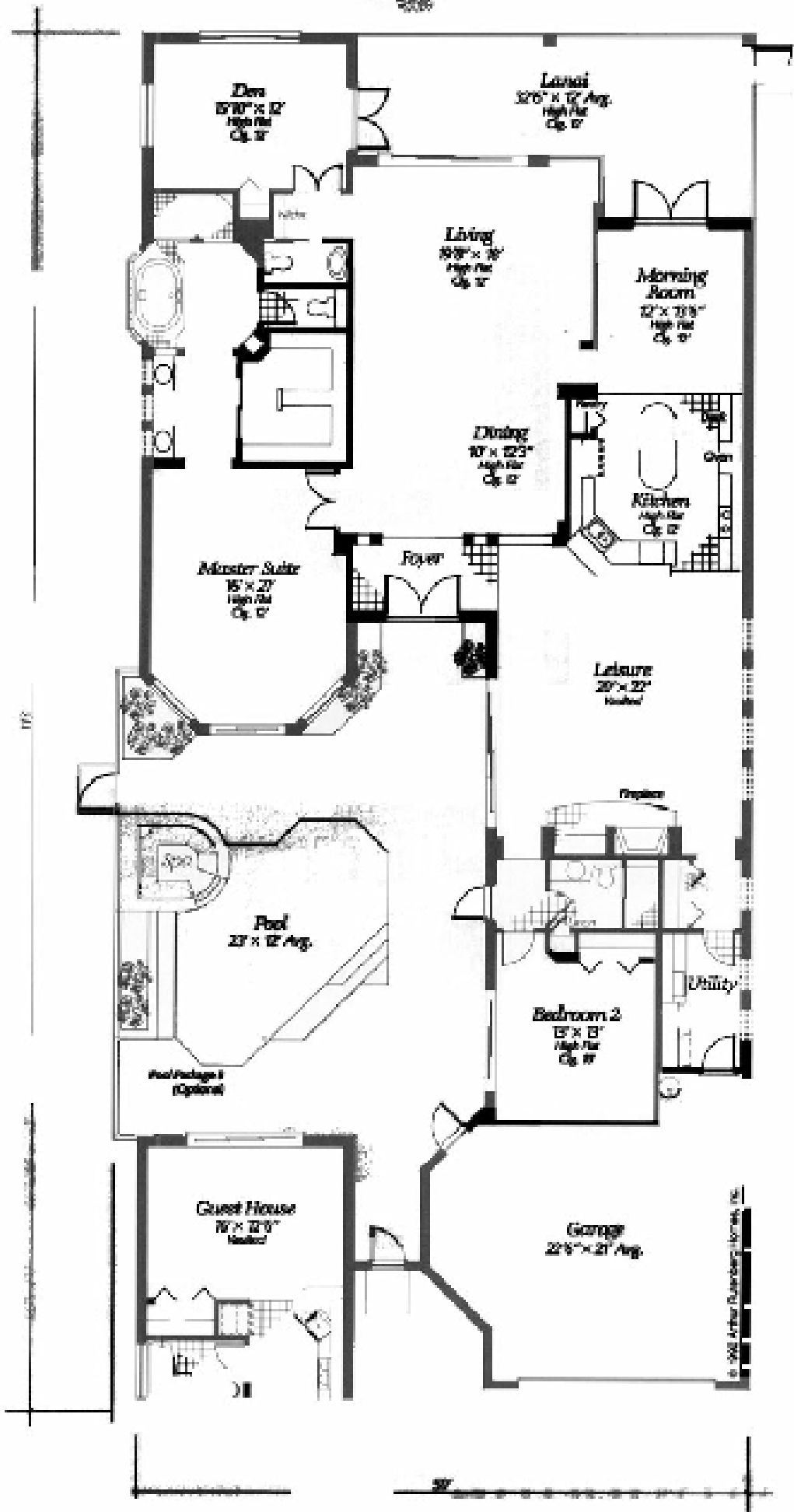
Square Footage

Living Area	
Under A/C	2,257 Sq. Ft.
Lanai	324 Sq. Ft.
Entry	76 Sq. Ft.
Garage	472 Sq. Ft.
TOTAL	3,129 Sq. Ft.

Kenington Golf & Country Club
 2700 Pine Ridge Road (one mile east of Airport Road), Naples, Florida 34109
 Phone (941) 689-9699 or 1-800-216-1845.

All dimensions and specifications are approximate and subject to change without notice. Square footage is based on exterior wall dimensions. Seller reserves the right to make changes in the materials, appliances, or equipment. Any substituted materials, appliances, or equipment shall be of equivalent or better quality. Some restrictions on exterior color selections may apply. Illustrations are an artist's rendering.





Plans and specifications subject to change without notice.