

## WATER'S EDGE

CENTER UNIT:

LIVING AREA 1703 S.F.

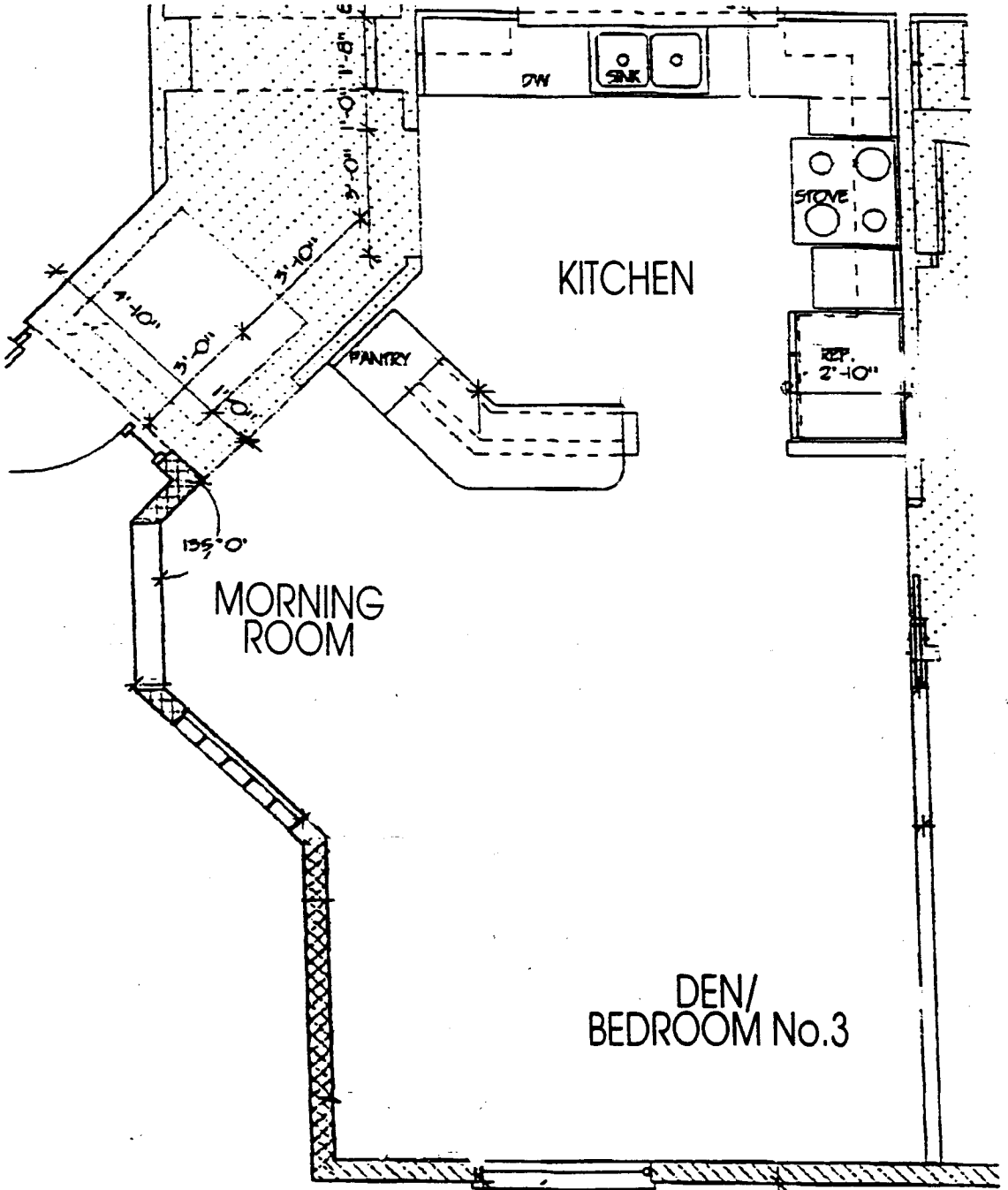
LANAI 159 S.F.

TOTAL 1862 S.F.

All graphic depictions, including dimensions and area, are approximate and subject to change without notice. Oral representations cannot be relied upon as correctly stating representation of the developer. For correct representations, make reference to the documents required by FLORIDA STATUTES SECTION 718.503 to be furnished by the developer to the buyer or lessee.

# WATER'S EDGE

## STANDARD DESIGN



$\frac{1}{4}'' = 1'-0''$