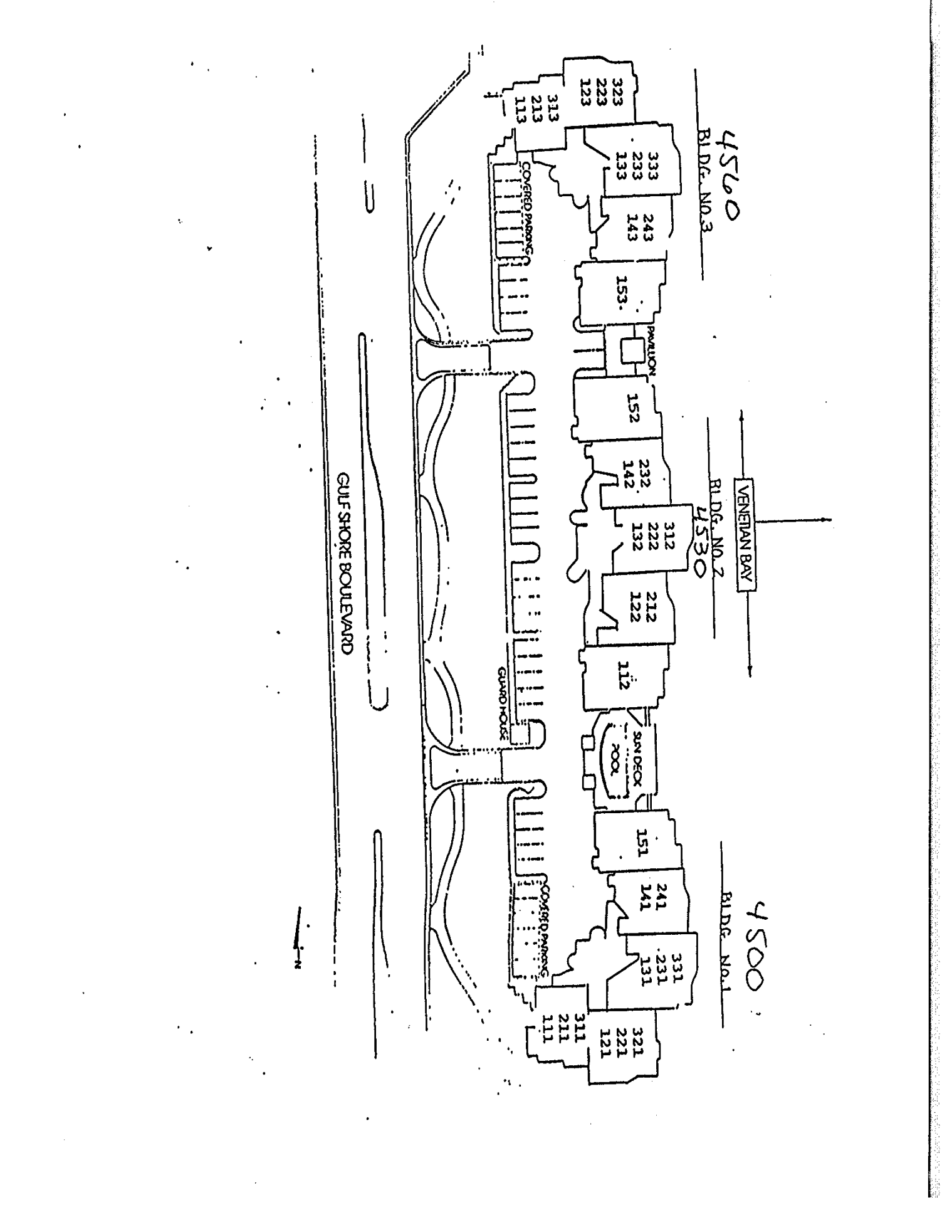


# THE TROPICS

ON VENTURA BAY



4560  
BLDG. NO. 3

4530  
BLDG. NO. 2

4500  
BLDG. NO. 1

VENETIAN BAY

GULF SHORE BOULEVARD

COVERED PARKING

PAVILION

GUARD HOUSE

SUN DECK ROOM

COVERED PARKING



313  
213  
113

323  
223  
123

333  
233  
133

243  
143

153

152

232  
142

312  
222  
132

212  
122

112

151

241  
141

331  
231  
131

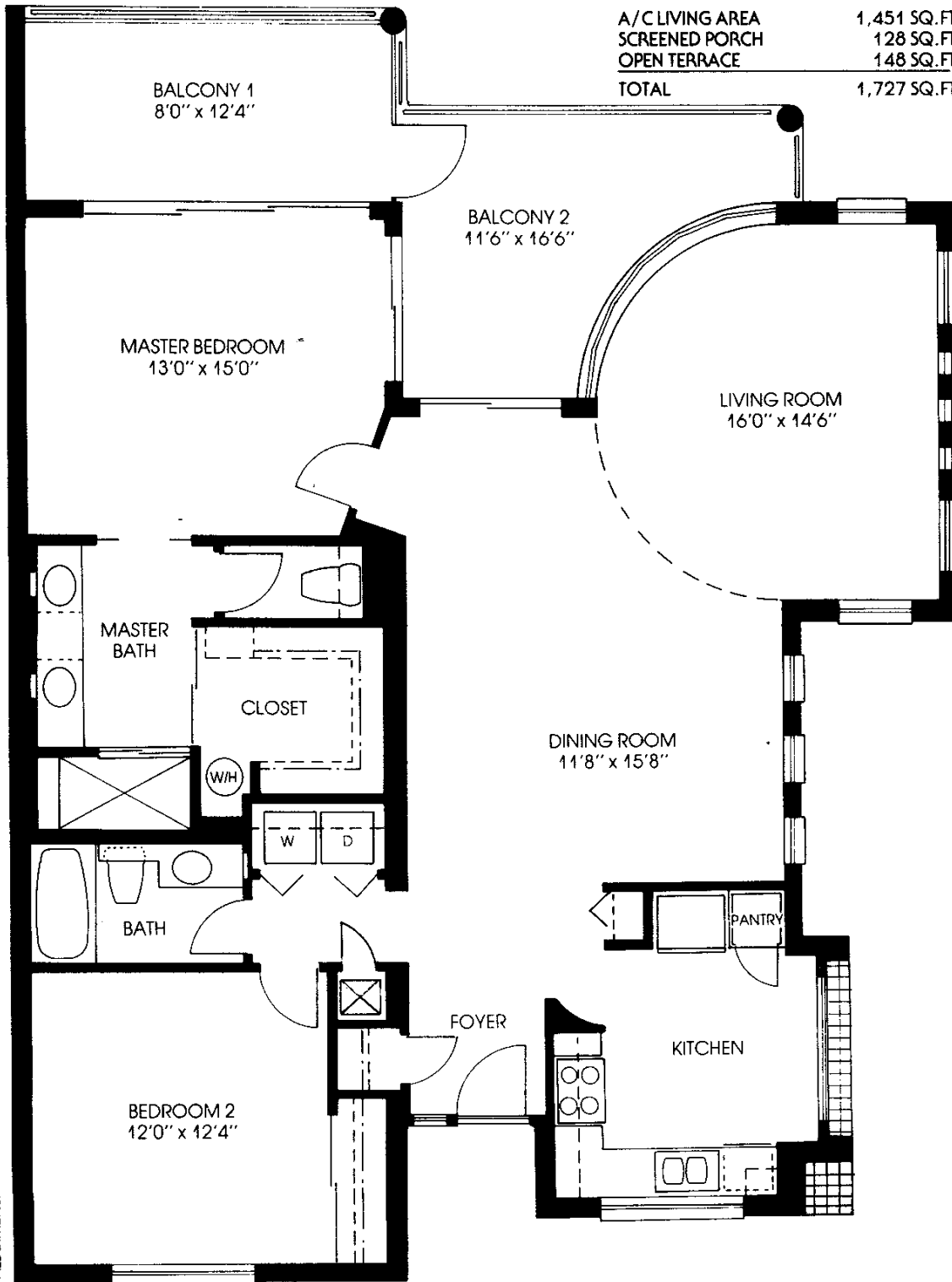
321  
221  
121

311  
211  
111

# THE TROPICS

## UNIT A-1

A/C LIVING AREA	1,451 SQ. FT.
SCREENED PORCH	128 SQ. FT.
OPEN TERRACE	148 SQ. FT.
<b>TOTAL</b>	<b>1,727 SQ. FT.</b>

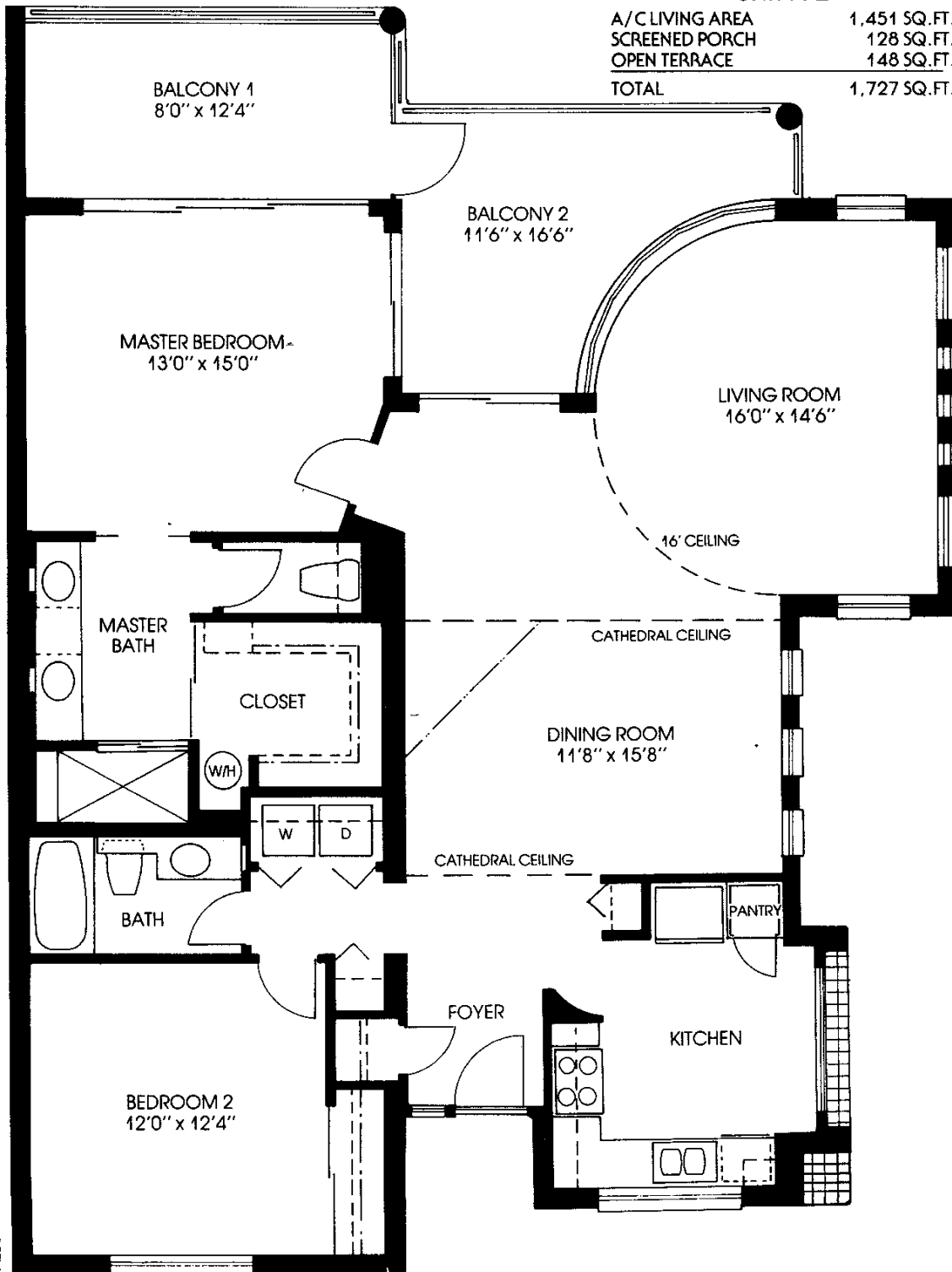


ALL DIMENSIONS ARE APPROXIMATE

# THE TROPICS

## UNIT A-2

A/C LIVING AREA	1,451 SQ. FT.
SCREENED PORCH	128 SQ. FT.
OPEN TERRACE	148 SQ. FT.
<b>TOTAL</b>	<b>1,727 SQ. FT.</b>

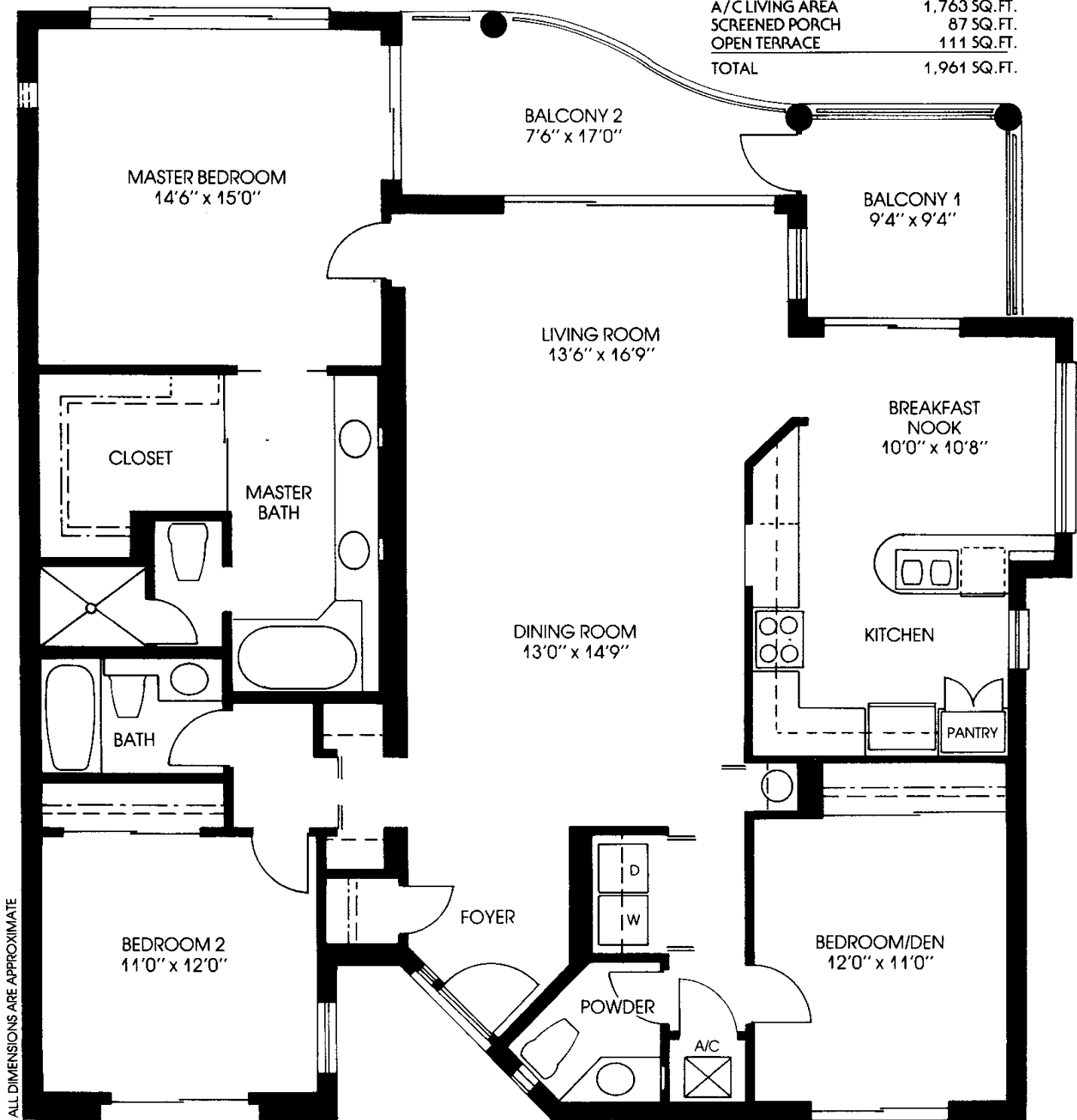


ALL DIMENSIONS ARE APPROXIMATE

# THE TROPICS

## UNIT B-1

A/C LIVING AREA	1,763 SQ. FT.
SCREENED PORCH	87 SQ. FT.
OPEN TERRACE	111 SQ. FT.
<b>TOTAL</b>	<b>1,961 SQ. FT.</b>

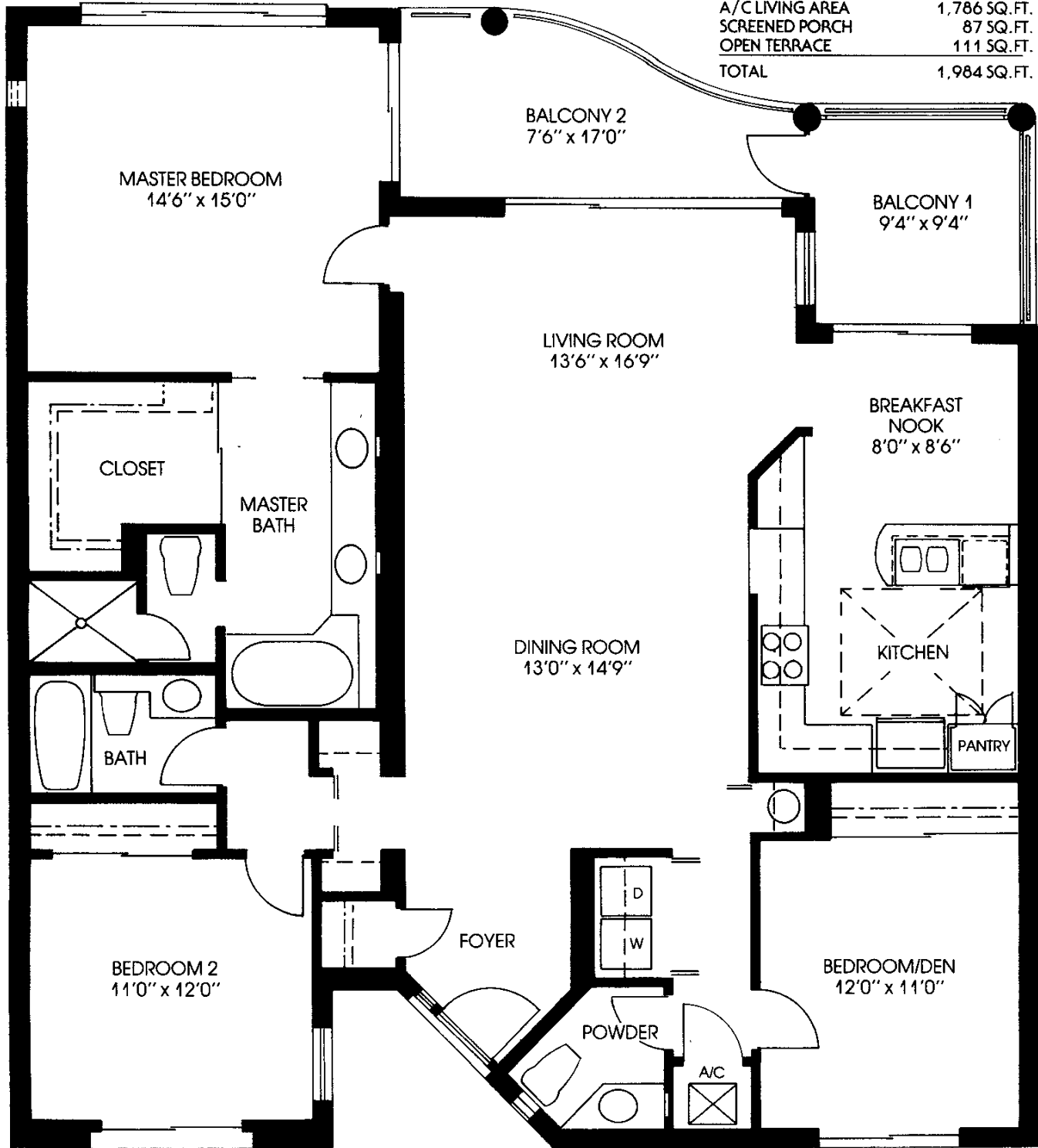


ALL DIMENSIONS ARE APPROXIMATE

# THE TROPICS

## UNIT B-2

A/C LIVING AREA	1,786 SQ. FT.
SCREENED PORCH	87 SQ. FT.
OPEN TERRACE	111 SQ. FT.
<b>TOTAL</b>	<b>1,984 SQ. FT.</b>



ALL DIMENSIONS ARE APPROXIMATE