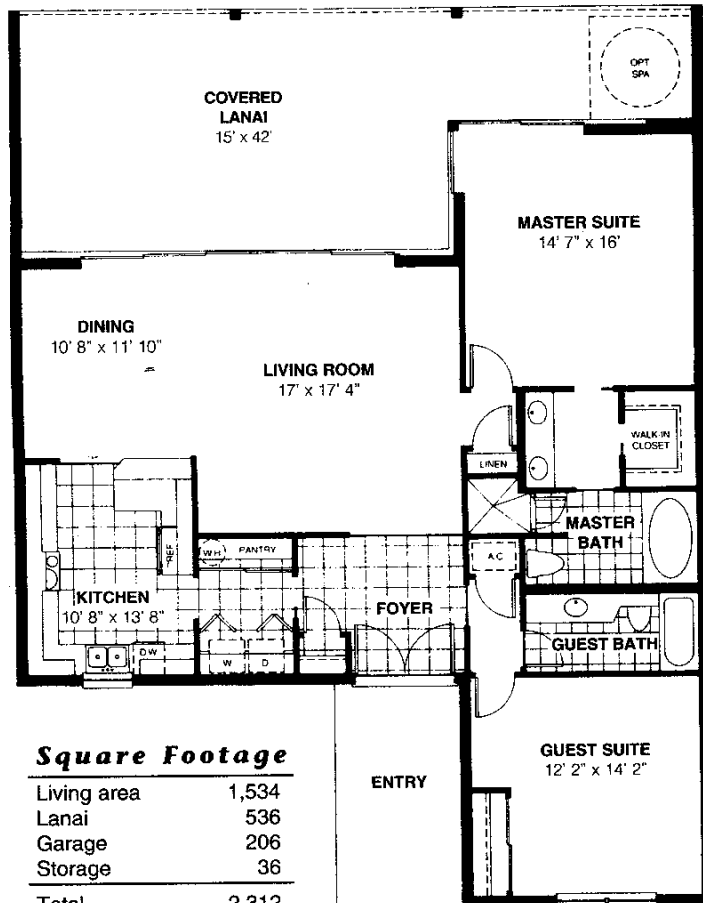


GARDEN APARTMENT CONDOMINIUMS

All our Garden Apartments have 42-foot wide lanais and private enclosed garages, with your choice between the water views of Crystal Lake or the golf course views of Stonegate Village. Tour the models and choose your view today!



The Kittiwake

Two Bedroom/Two Bath

from \$161,000

ORAL REPRESENTATIONS CANNOT BE RELIED UPON AS CORRECT
REFERENCE TO THIS BROCHURE AND TO THE DOCUMENTS REQUIRE