

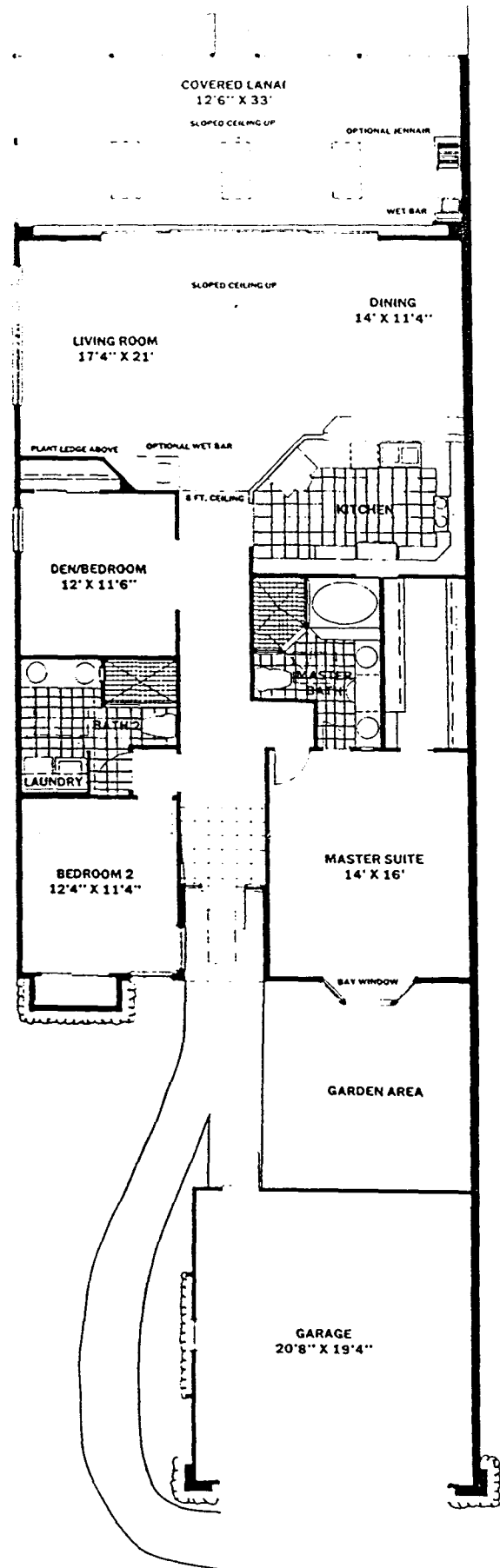
# Available Units

107 Cypress View Drive - mls# 305504 - \$239,900  
 Offered unfurnished, shows beautifully, close to 1st tee. Overlooks fairway at nature preserve. Golf membership available for \$7,000 with assignment of right to equity. (3br/2ba, different floor plan)

131 Cypress View Drive - mls# 300612 - \$198,900  
 Offered furnished, overlooks private wooded area and first fairway. Spa off master suite. Price includes membership in club with assignment of right to equity.

167 Cypress View Drive - mls# 300607 - \$194,500  
 Offered furnished, with pool. Overlooks trees and 2nd fairway. Very private location. Seller will pay for social membership in club.

LIVING AREA	1817 SQ.FT.
LANAI	413 SQ.FT.
ENTRY	36 SQ.FT.
GARAGE	427 SQ.FT.
<b>TOTAL</b>	<b>2693 SQ.FT.</b>



ALL REFERENCES TO ROOM DIMENSIONS AND SQUARE FOOTAGE ARE APPROXIMATE AND SUBJECT TO CHANGE