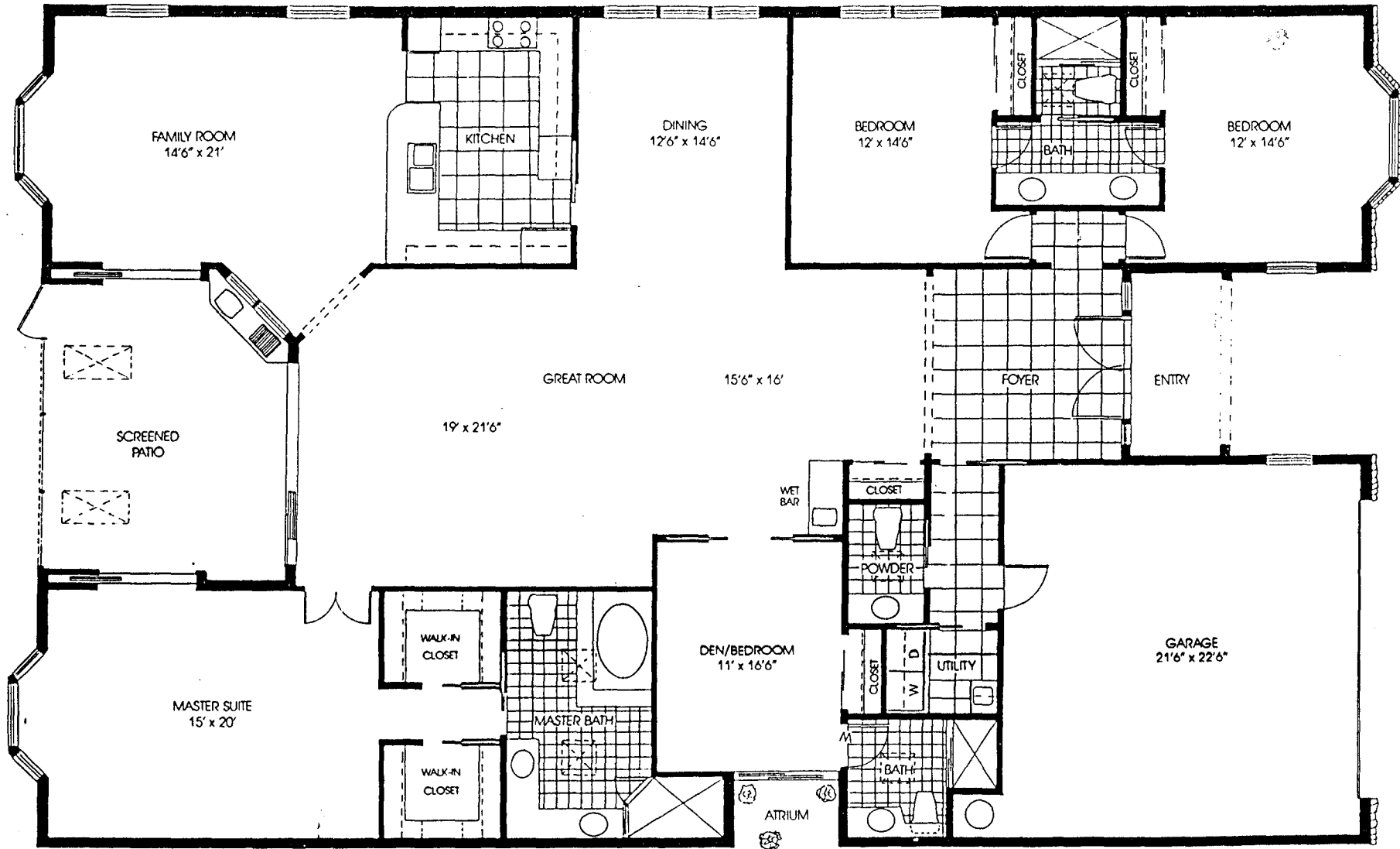


# Osprey

FOUR BEDROOM, FAMILY ROOM, THREE AND ONE HALF BATH, GARAGE

LIVING AREA	3,049 SQ. FT.
PATIO	265 SQ. FT.
ENTRY	26 SQ. FT.
GARAGE	534 SQ. FT.
<b>TOTAL</b>	<b>3,874 SQ. FT.</b>



ORAL REPRESENTATIONS CANNOT BE RELIED UPON AS CORRECTLY STATING THE REPRESENTATIONS OF THE DEVELOPER. FOR CORRECT REPRESENTATIONS, MAKE REFERENCE TO THE BROCHURE AND TO THE DOCUMENTS REQUIRED BY SECTION 718.503, FLORIDA STATUTES, TO BE FURNISHED BY A DEVELOPER TO A BUYER OR LESSEE.

ALL REFERENCES TO SQUARE FOOTAGE AND ROOM DIMENSIONS ARE APPROXIMATE AND SUBJECT TO CHANGE.