

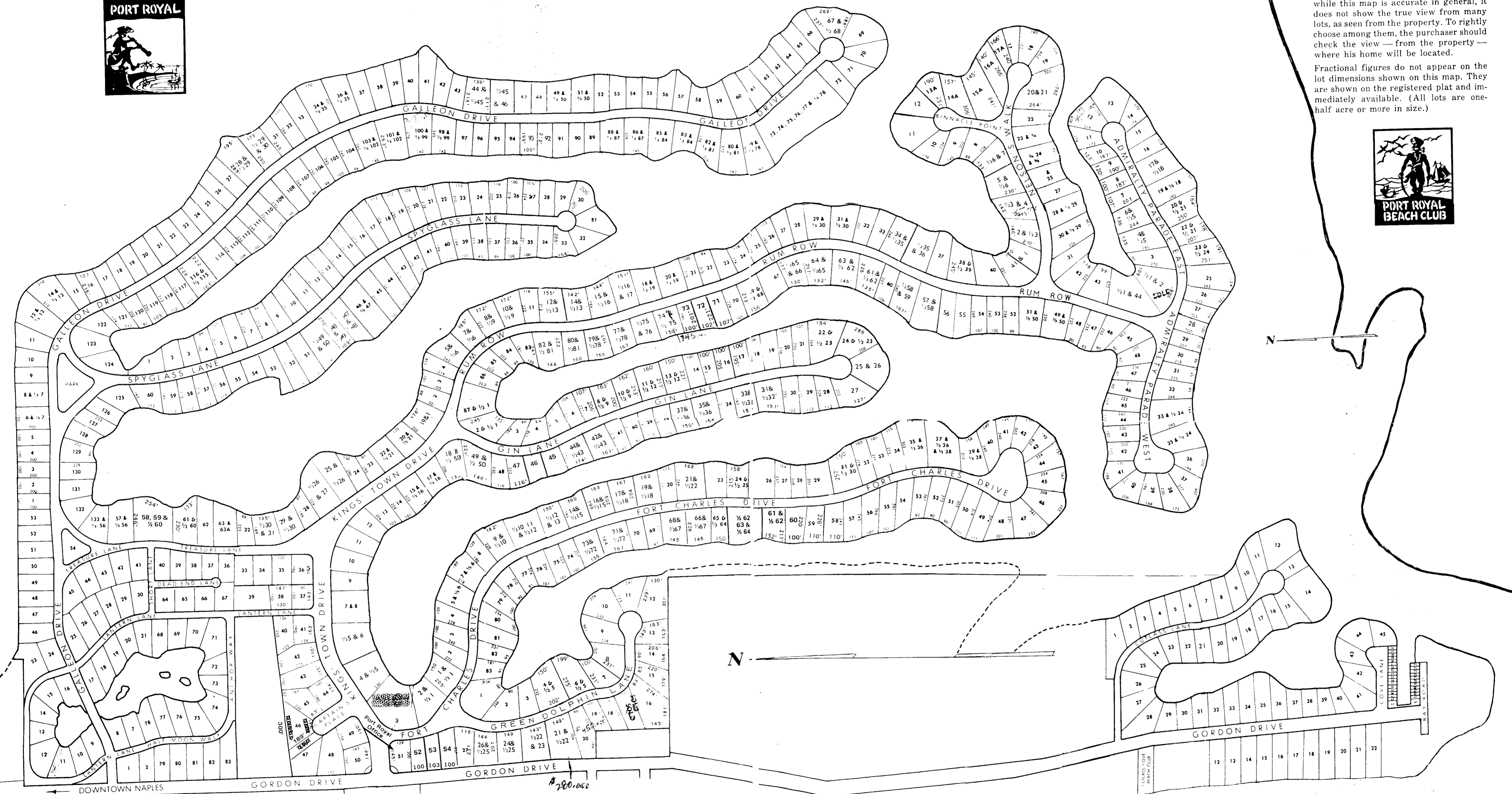


Port Royal properties must be purchased before they can be purchased. And for two different reasons:

1. No sales of property are made to persons other than those who have been accepted for membership in the Port Royal Beach Club by the Membership Committee. Obviously, this application must be made in person.

2. These waterfront sites command widely differing individual outlooks. And while this map is accurate in general, it does not show the true view from many lots, as seen from the property. To rightly choose among them, the purchaser should check the view — from the property — where his home will be located.

Fractional figures do not appear on the lot dimensions shown on this map. They are shown on the registered plat and immediately available. (All lots are one-half acre or more in size.)



MASTER PLAN PORT ROYAL

A SUBDIVISION IN
NAPLES, COLLIER COUNTY, FLORIDA



LOTS SHOWN IN BLUE ARE SOLD. LOTS AVAILABLE IN PORT ROYAL.