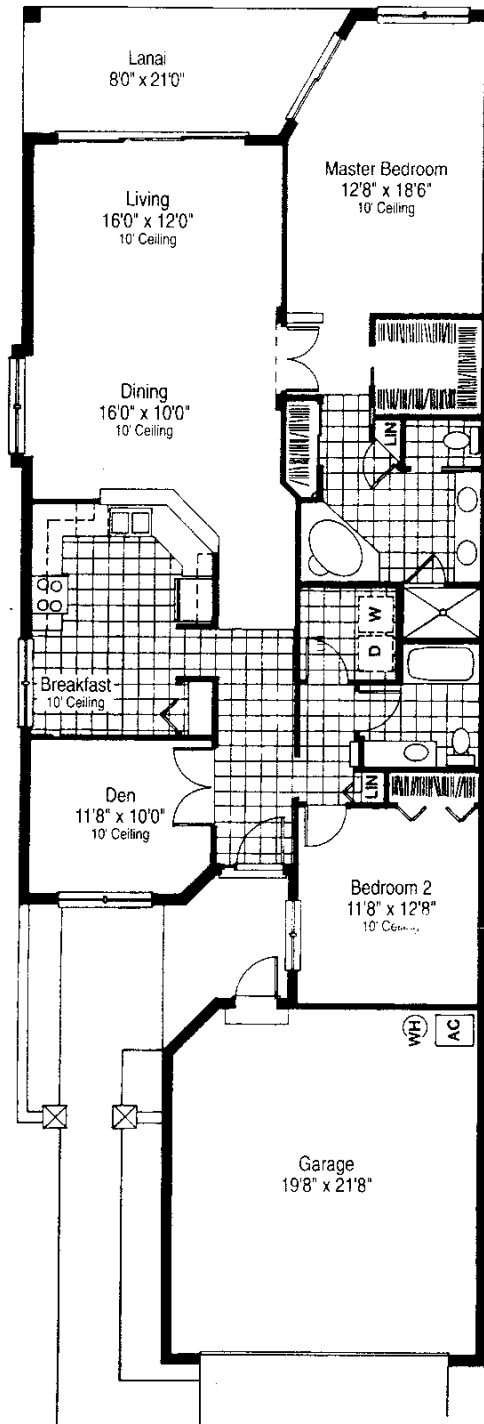




BEDFORD
2 Bedroom, 2 Bath, Den



Attached Villa Homes at Shoreham



**Attached Villa
Homes at
Shoreham**

BEDFORD

A/C Living Area	1,639 Sq. Ft.
Lanai	168 Sq. Ft.
Garage	441 Sq. Ft.
Entry	65 Sq. Ft.
TOTAL	2,313 Sq. Ft.

Prices and features subject to change without notice. Offer void where prohibited by law. Broker cooperation welcomed. These drawings are conceptual only and are for the convenience of reference. They should not be relied upon as representation, express or implied, of the final detail. The developer expressly reserves the right to make modifications, revisions, and changes which it deems desirable in its sole and absolute discretion.

