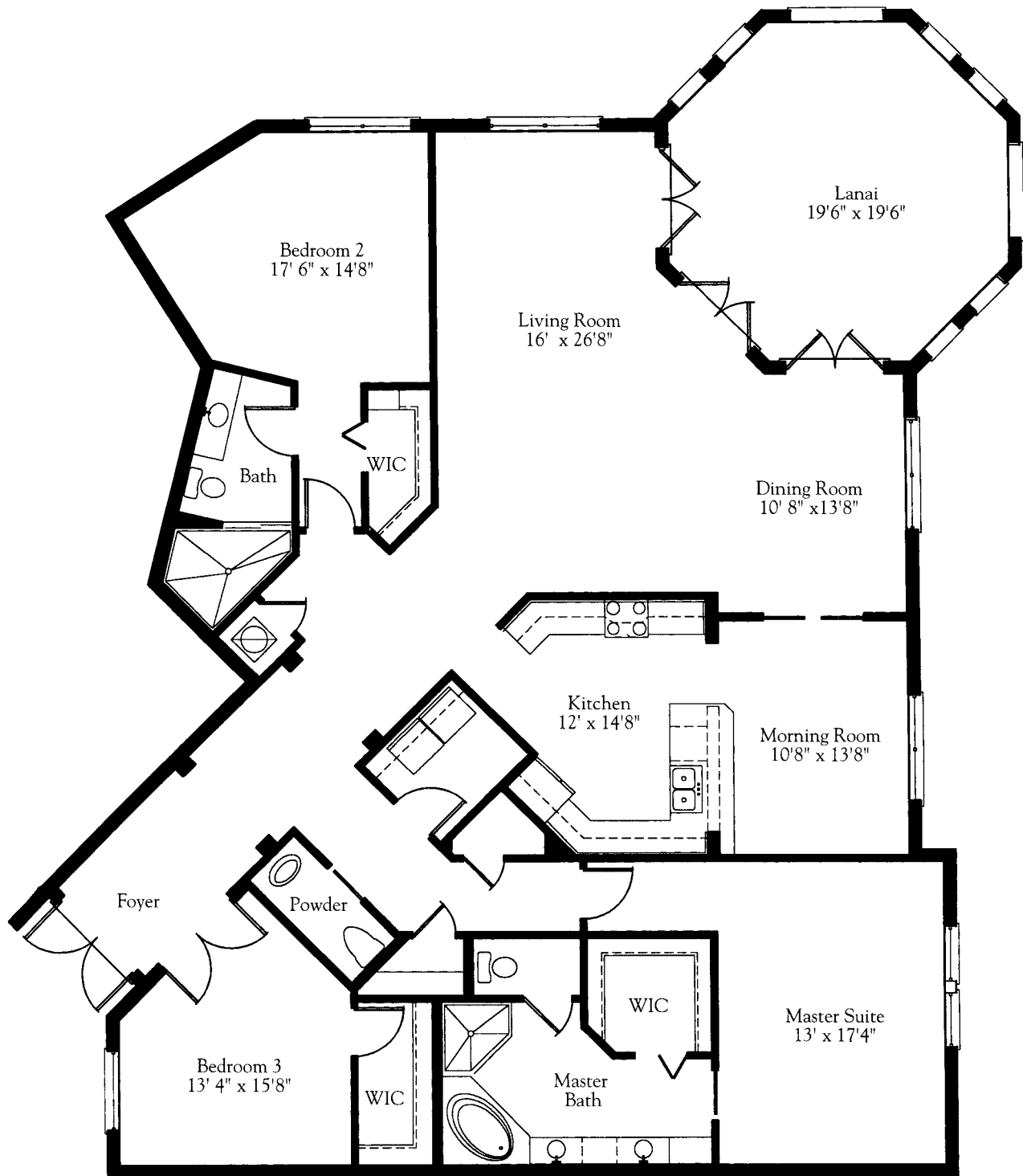


**BUILDING 5 RESIDENCE 07**  
**BUILDING 4 REVERSE RESIDENCE 07**



3 BEDROOM ♦ 2 1/2 BATH	
LIVING AREA	2,504 SQ.FT.
LANAI	345 SQ.FT.
<b>TOTAL</b>	<b>2,849 SQ.FT.</b>

*All dimensions are approximate. The developer reserves the right to change and alter all materials, specifications, features, dimensions, and designs without notice. See building plans for special conditions on window locations, elevators, stairs, and walkways.*