

All dimensions are approximate. This floor plan is subject to change without notice. The Seller reserves the absolute right, in its sole judgement and discretion, to substitute appliances, materials, fixtures and equipment of equal or greater quality or value for those specified. The living area square footage stated includes the private elevator vestibule area which is a limited common element. (L.C.E.)

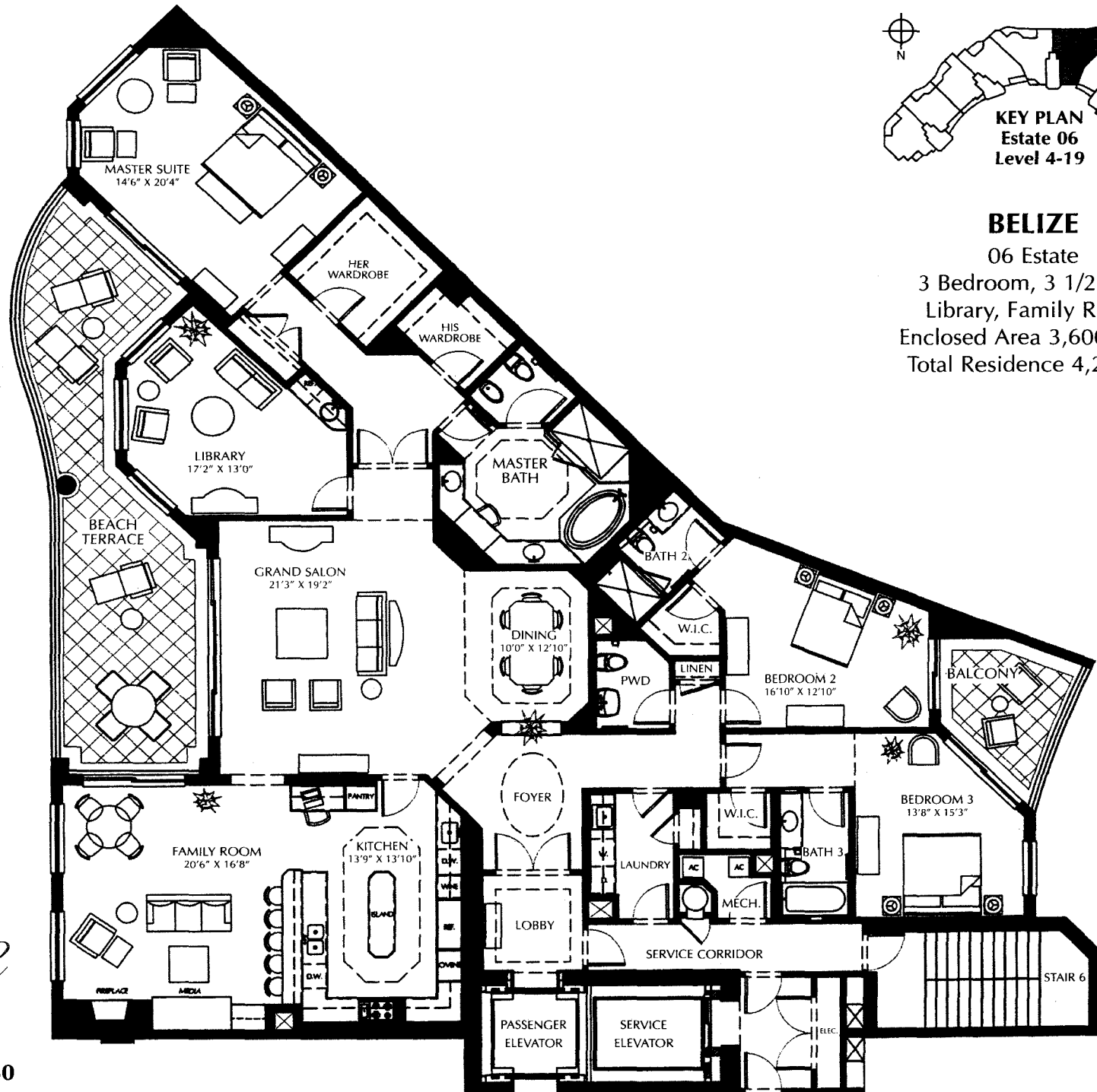
Oral representations cannot be relied upon as correctly stating the representations of the developer. For correct representations, make reference upon this brochure and to the documents required by section 718.503 Florida Statutes, to be furnished by the developer to a buyer.



BELIZE

06 Estate

3 Bedroom, 3 1/2 Bath
Library, Family Room
Enclosed Area 3,600 ACSF
Total Residence 4,200 SF



Belize
Cape Marco

941.642.2510 • 800.662.7260
wcicomunities.com