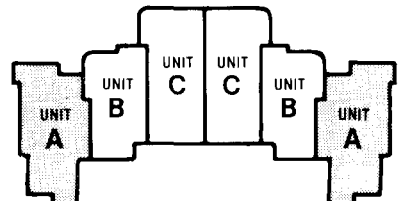
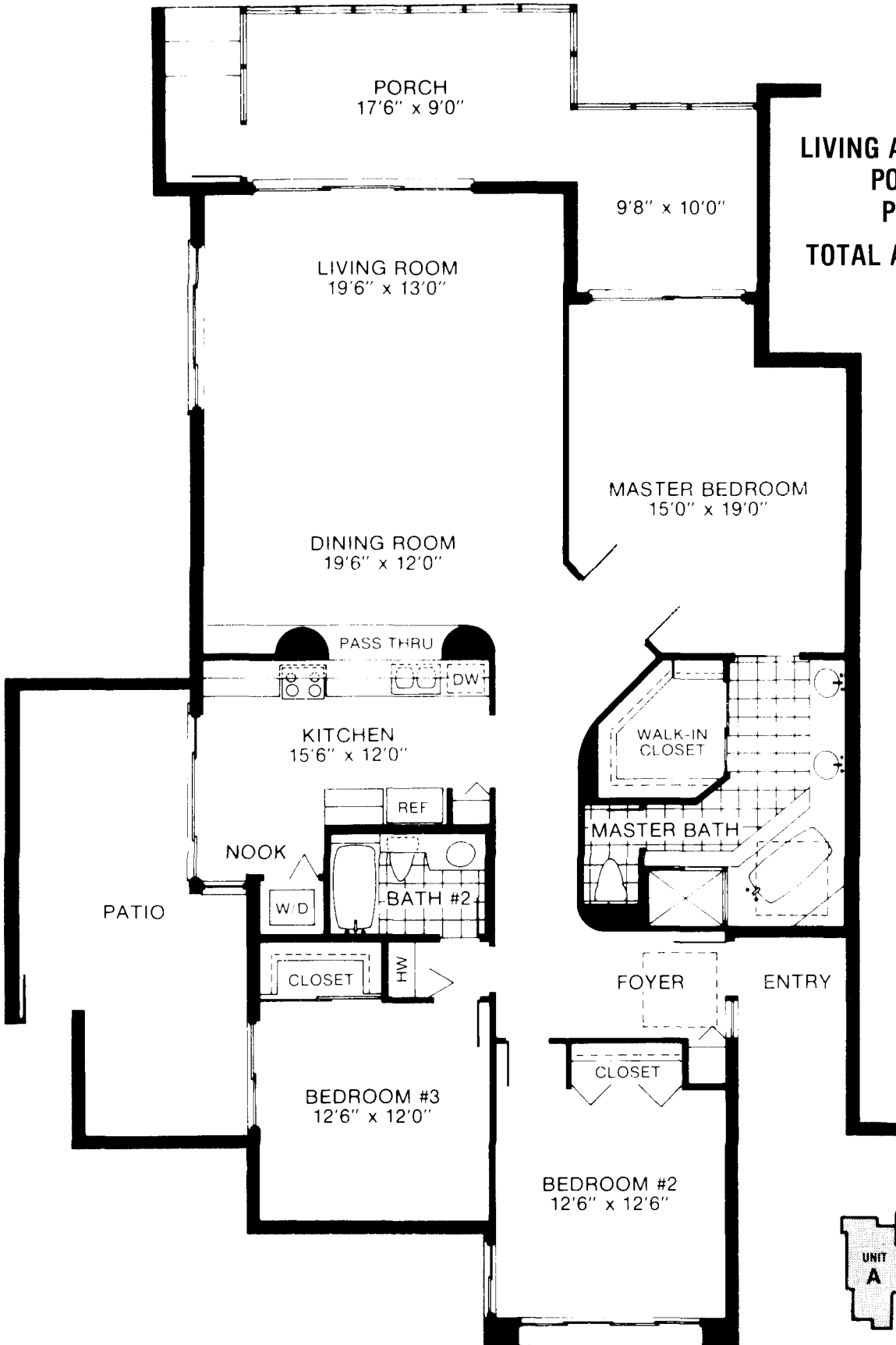


#415



UNIT A

LIVING AREA	1888 sq. ft.
PORCH	255 sq. ft.
PATIO	240 sq. ft.
TOTAL AREA	2383 sq. ft.



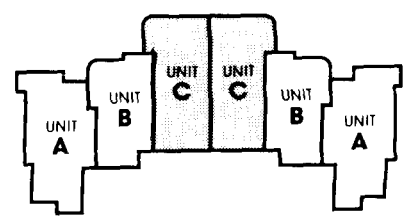
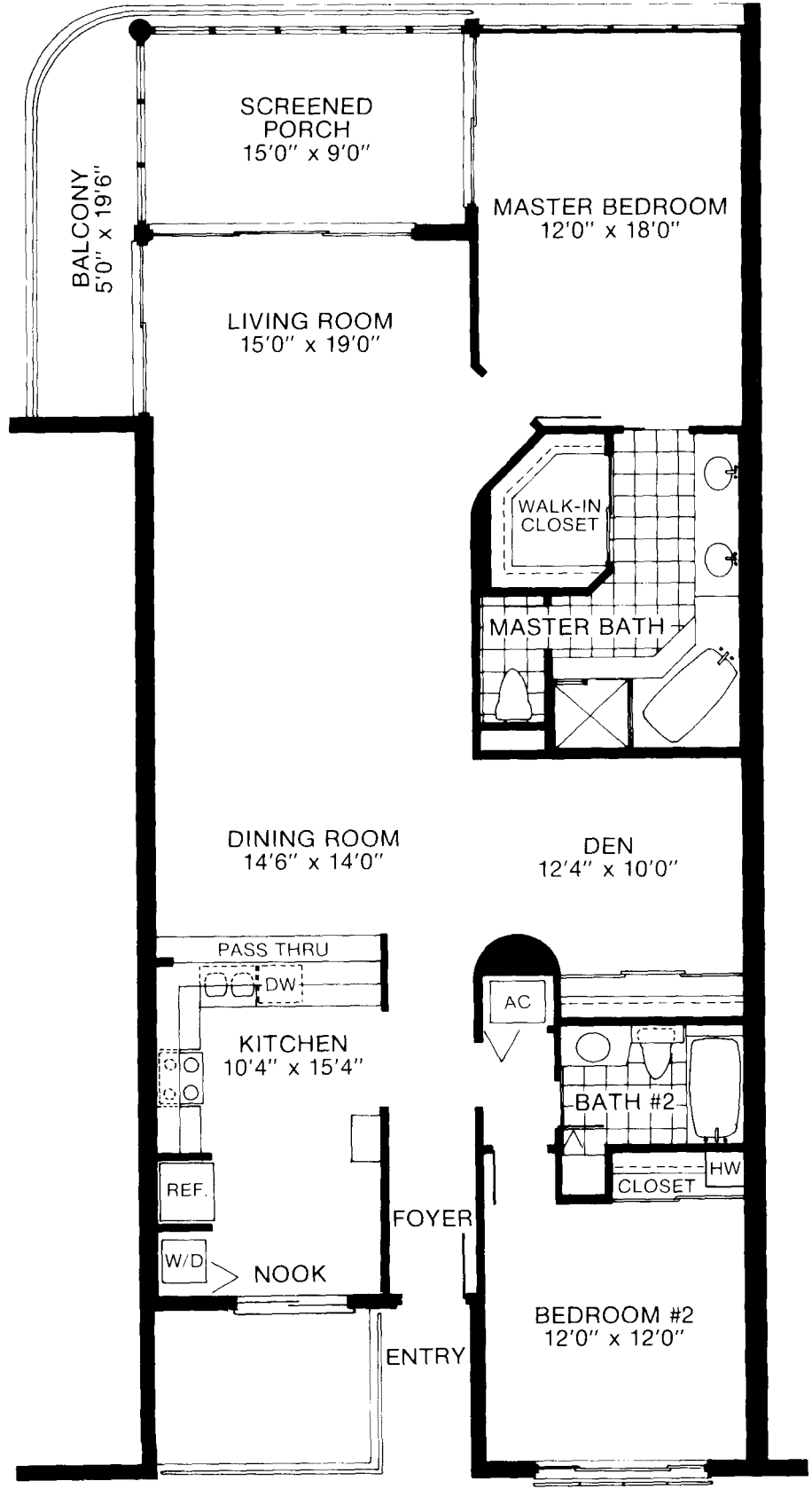
423

UNIT

C



LIVING AREA	1630 sq. ft.
PORCH/BALCONY	234 sq. ft.
TOTAL AREA	1839 sq. ft.



FOUR BUILDINGS
FOUR FLOORS
72 UNITS

PARK SHORE LANDINGS

305 - 355 PARK SHORE DRIVE

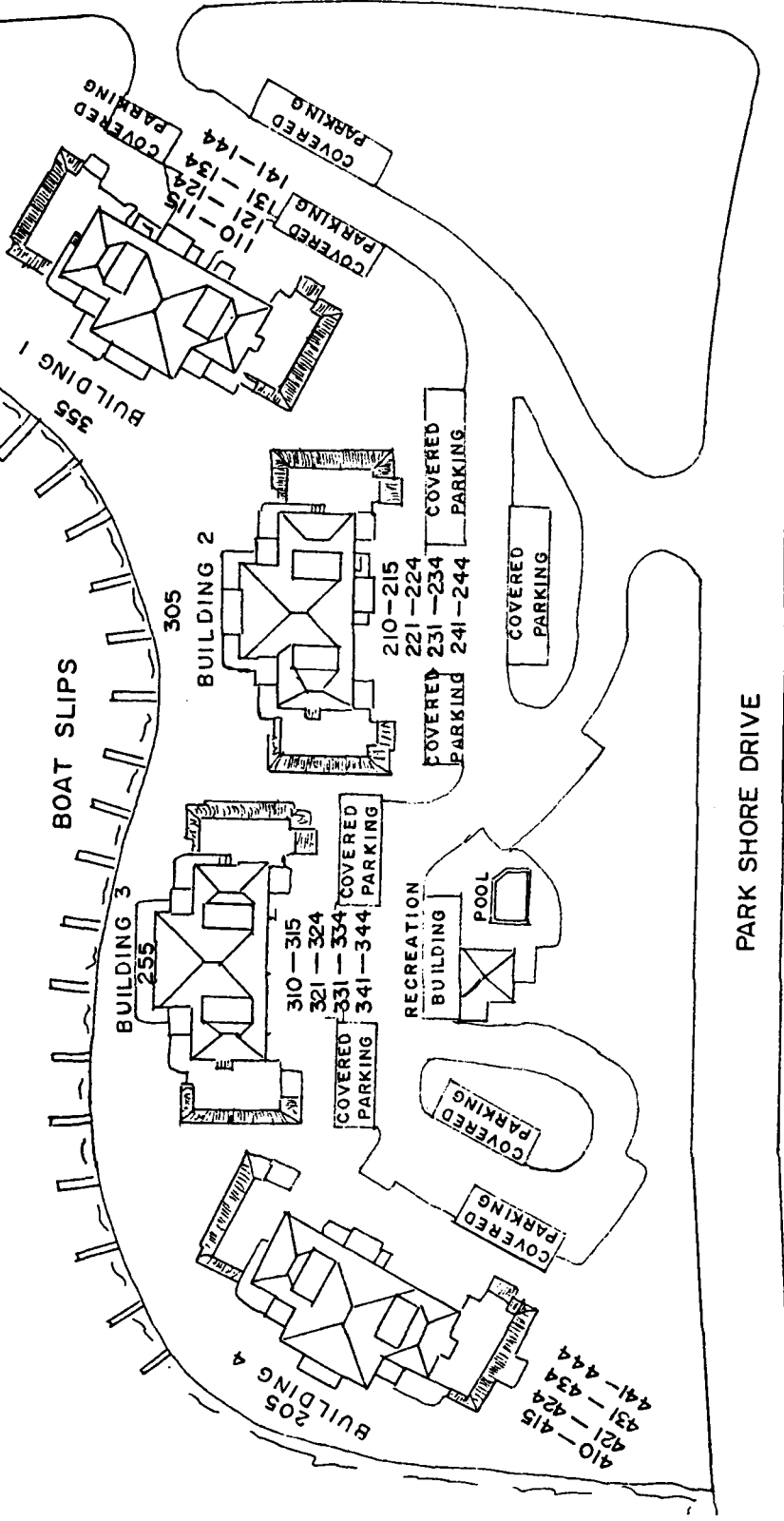
ZONE 6

VENETIAN BAY

BOAT SLIPS

PARK SHORE DRIVE

CRAYTON ROAD



BUILDING 1
355
COVERED PARKING 141-144
COVERED PARKING 131-134
COVERED PARKING 121-124
COVERED PARKING 110-115

BUILDING 2
305
210-215
221-224
COVERED PARKING 231-234
COVERED PARKING 241-244

BUILDING 3
255
310-315
321-324
COVERED PARKING 331-334
COVERED PARKING 341-344

BUILDING 4
205
410-415
421-424
431-434
441-444

RECREATION BUILDING
POOL
COVERED PARKING

COVERED PARKING

COVERED PARKING

LIVING AREA 1372 sq. ft.
 PORCH/BALCONY 251 sq. ft.
 TOTAL AREA 1623 sq. ft.

B
 THIRD &
 FOURTH
 FLOORS

